

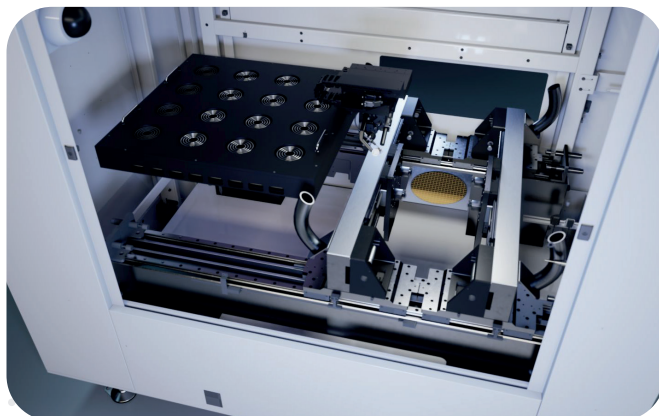
PRODUCT

ODRA Multiplatform



Key features

- Single Micron Precision Dispensing**
 Achieves ultra-fine feature resolution down to 1 μm , powering miniaturization and advanced microelectronic structures.
- High-Mix, Low-Volume Manufacturing**
 Optimized for flexible production and rapid prototyping of complex microelectronic components, with minimal setup and changeover time.
- Extended Working Area for Versatile Production**
 The large-format platform (up to 610 mm x 610 mm) supports the processing of full wafers and production of multiple components in a single load.
- Wide Material Compatibility**
 Compatibility with a wide range of functional materials, including conductive, dielectric, and specialized nano-inks, enabling diverse processes and applications.
- Vision-based Automatic Alignment**
 Integrated intelligent fiducial marker detection system ensures repeatable positioning precision without manual operation.
- Multi-Application Platform**
 Engineered for versatility in semiconductors, displays, sensors, and advanced packaging.

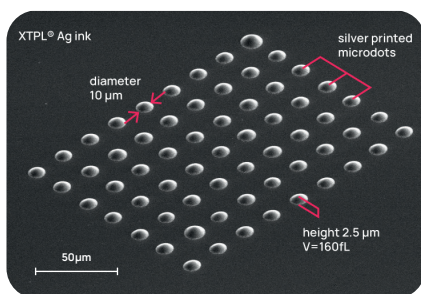
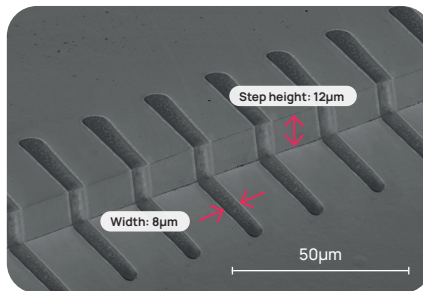
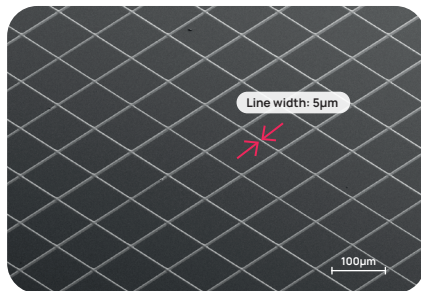


Integration platform combining optical-level accuracy, modular flexibility, and process control for next-generation electronics manufacturing.

Feature sizes range



Ultra-precise feature resolution on complex substrate topography



System configuration

Item	Details	Description
Standard dispensing feature size	1 - 50 μm	Single-pass, XTPL Ag Nanopaste CL85
Printing materials compliance	min 10 cP >1000000 cP	XTPL High-concentration metallic nanopastes, polymers, solder paste, isolators, quantum dot inks and more
Standard nozzle size	1.5 3.5 5 8 10 20 μm	Special sizes available on request
Side view process monitoring	Real-time	X axis microscopic camera system 30× optical magnification
Top view monitoring system	Real-time	Up to 50× optical magnification
AOI System	✓	Vision system for pre-print alignment and fiducial recognition
XY-axes working area	610 × 610 mm 24 × 24 in	Linear motors: ±2 μm repeatability
Precise vertical Z-axis stroke	26 mm	High precision motor: ±0.2 μm repeatability
Control software	✓	Graphical User Interface (GUI)
System dimensions	W1090 × D1850 × H1950 mm	XTPL UPD System® - Standalone, based on granite structure
Compressed air inlet	11 bar	1:4:1 Compressed Air Purity Class according to ISO 8573-1:2010
Electric supply	Regionally adapted	AC 230V or 110V
SNAP technologies	[SNAPVISION] [SNAPCURE] [SNAPLIGHT] [SNAPMOTION] included	

Contact our team

XTPL S.A., Legnicka 48E
54-202 Wrocław, Poland

✉ sales@xtpl.com

XTPL Inc., Greentown Labs
444 Somerville Ave, Somerville, MA 02143 USA

✉ info.usa@xtpl.com

xtpl.com

