

[SNAPVISION]

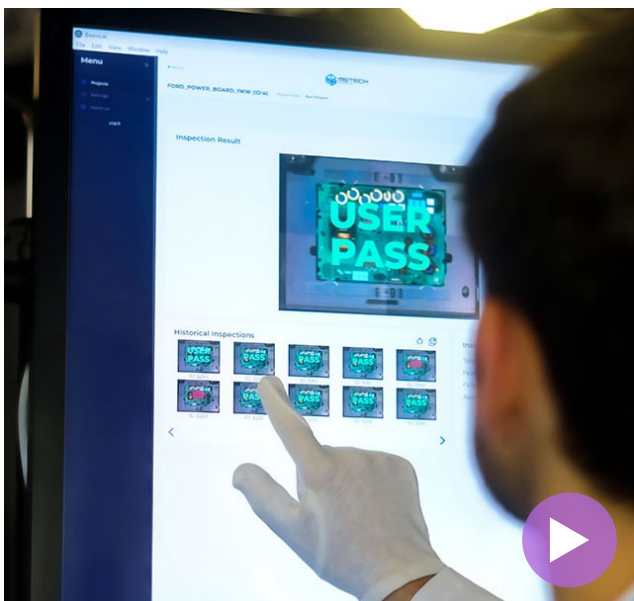
**MULTI-PURPOSE VISION  
ENGINE FOR ULTRA-HIGH  
SPEED INSPECTION.**



[ WORLD'S BEST PRODUCTIVITY ]

[SNAP VISION] is an in-line 2D Automated Optical Inspection (AOI) system for real-time quality control in production environments.

It can be integrated into MSTECH Europe units or third-party machines.



**VISION TECHNOLOGY**

- Intuitive programming UI.
- Typical inspection time: under 4 seconds, depending on the application.
- Coatings thickness trend verification.
- UV traceable.
- Light source: multi-LED illumination.
- No periodical camera calibration needed.
- AI based diagnosis.
- Proactive analysis engine.
- Industry 4.0 MES/FIS and Data sharing.
- Fixed inline AOI module
- Single or dual lane configuration.
- Industrial rigid structure for vibration stability.
- Precision optical alignment.

[WORLD'S BEST PRODUCTIVITY]

// MODELS

■ **SNAPVISION – XL**

- » Inspection Area (FOV): 530 x 400 mm.
- » Working Distance: 860 mm
- » Resolution: 40 µm.

**Application:** Large-format PCBA inspection (coating, marking, general AOI) with extended coverage.

■ **SNAPVISION – L**

- » Inspection Area (FOV): 300 x 130 mm.
- » Working Distance: 490 mm.
- » Resolution: 24 µm.

**Application:** High-resolution inspection for semiconductor and fine-feature detection in compact dual lane configurations.

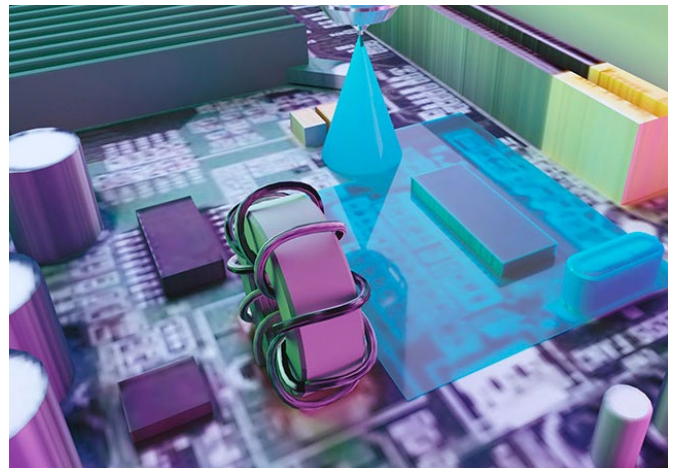
■ **SNAPVISION – On demand**

- » Inspection Area (FOV): 100 to 600 x 100 to 600 mm.
- » Working Distance: 400 to 1200 mm.
- » Resolution: 24 µm to 150 µm.

**Application:** Versatile integration modules, from THT to high resolution wafer inspection larger coverage area.

// APPLICATIONS

Underfill, potting, glue, corner bonding, thermal paste, gap filler, coating, nano coating, screw, top THT and bottom solder joint, optical bonding, latex, wax, foreign particles, datamatrix, labels, OCR, QR and more.



[SNAPVISION]

DEVELOPMENT OF INNOVATIVE AND ENVIRONMENTALLY FRIENDLY SOLUTIONS, SURPASSING CURRENT TECHNOLOGICAL STANDARDS.



**FACTORYCENTER**  
BARCELONA - SEOUL

**BUSINESSCENTER**  
AMERICA - EUROPE - AFRICA - ASIA



**FACTORYCENTER**  
BARCELONA

Carrer de la Masia en Notari, 4, 08800 Vilanova i la Geltrú, Barcelona. Spain

[administrative@mstechcorp.eu](mailto:administrative@mstechcorp.eu)

**BUSINESSCENTER**

[sales@mstechcorp.eu](mailto:sales@mstechcorp.eu) - [services@mstechcorp.eu](mailto:services@mstechcorp.eu)



[WWW.MSTECHCORP.EU](http://WWW.MSTECHCORP.EU)