

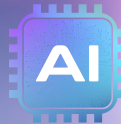
# SEMINFINITY

[SNAPVISION][SNAPCURE]

## HIGH UPH MULTI FUNCTION PLATFORM

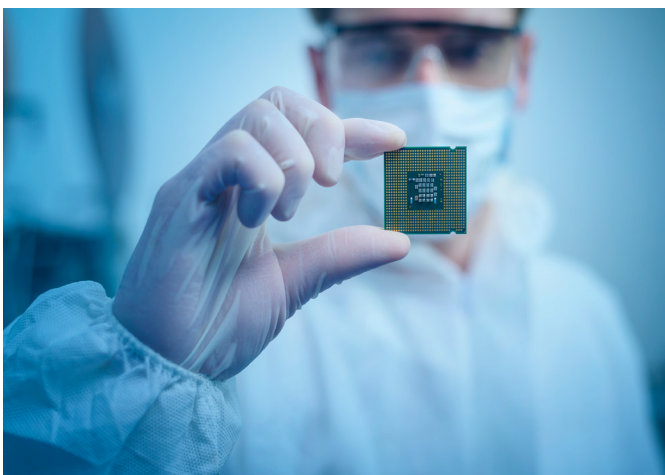
### COMPLIANCES

- ISO6 (Class 1000)
- ESD Level 1
- Full CE / UL Certification
- Semi S2/S8 Compliant
- SECS/GEM ready
- EMC



## HIGH UPH MULTI-FUNCTION PLATFORM

A unique combo inspection and curing concept for high-volume production with optimized process stations up to 4 when configured in a Dual Lane conveyor setup.



### STANDARD OPTIONS



### UNIQUE CONCEPT

#### CONFIGURATION FLEXIBILITY

- [SNAPVISION][SNAPCURE] inside.
- Multi-language 32" tactile HMI.
- No air supply required.
- Multi closed-loop processor sensors.
- Fine pitch Datamatrix reading.
- ISO6 (Class 1000) / ESD Level 1 / Full CE / UL.
- Certification / Semi S2/S8 Compliant SECS.
- GEM ready / EMC / F47NPA79.

#### PRODUCTIVITY

- Less than 2 seconds inspection time.
- Curing time under 5 seconds per tray.
- Dual lane.

#### FULL INTERCONNECTED TRACEABILITY [SMARTBOX] OPTION

- Process Tracker embedded software platform with on demand communication & KPI definition.
- Live process parameters log.
- Embedded trend analysis.

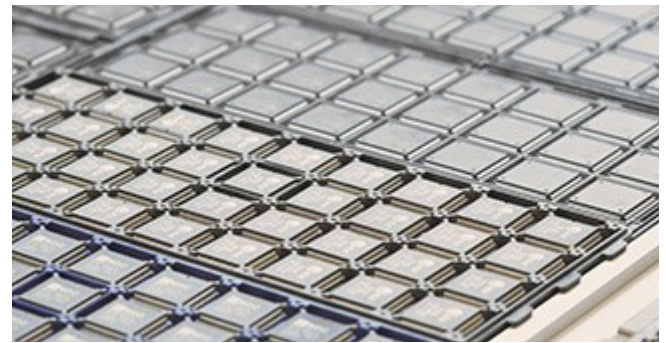
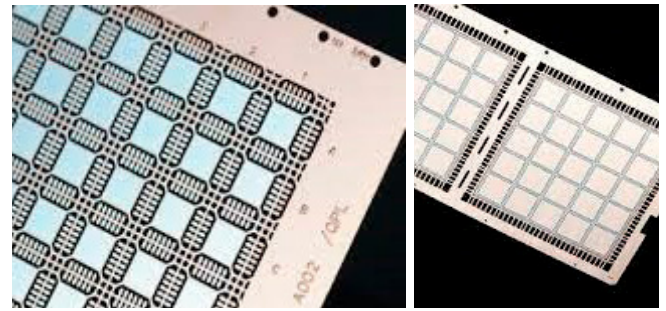
#### OPTIMIZATION

- Floor space and Energy efficient.

## FEATURES

Single or dual lane capability up to 460 mm.

- Automatic width adjustment.
- Inlet / Outlet shutters.
- Conveyor direction L to R (R to L optional).
- Wavelength controller and closed-loop radiation.
- Ionizer.
- Real time process monitoring.
- Multi-language user interface & documentation.



## OPTIONS

- Process related sensors.
- ESD impurity sensor
  - Humidity and temperature
  - UV wavelength and dose
  - More on demand
- Dispensed geometry element trend analysis with up-stream communication.
- Local process supervision display.
- Industry 4.0 - SECS/Gem, UAC, Hermes, Opcon, IPC-CFX, Process Tracker & more on demand.



## APPLICATIONS

- » High-resolution micro dispensing
- » Micro coating

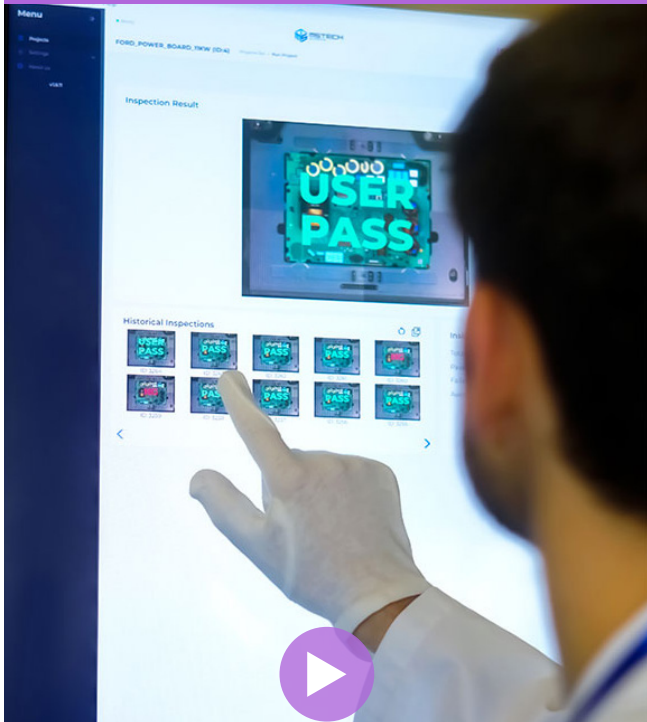
### SPECIFICATIONS SINGLE AND DUAL LANE BELT

Dimensions	1200x1850x1650 mm
Voltage	AC 110/220V, 50/60Hz
Weight	Approx: 850kg
Conveyor type	Belt
Max conveyor weight	10 kg (22lbs)
Dual mode max width	250 mm
Single mode max width	460 mm

**[SNAPVISION]**

**[ WORLD'S BEST PRODUCTIVITY ]**

**ON-DEMAND IMAGE ANALYSIS**



**VISION TECHNOLOGY**

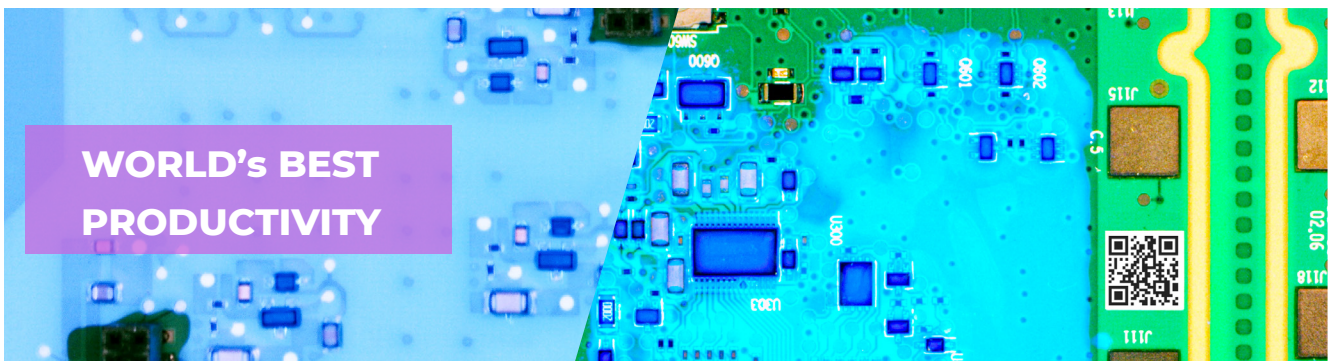
- Resolution standard down to 50 um.
- Standard FOV up to 500 x 450 mm.
- Intuitive programming UI.
- Complete inspection time below than 4 sec.
- Ultra-thin coating compatible.
- FOV ø: up to 600x500 mm.
- Thickness measurement.
- Light source: multi-LED illumination.
- No periodical calibration of camera needs.
- AI based diagnostic.
- Proactive analysis engine.
- Industry 4.0 MES/FIS and data sharing.

**[SNAPVISION]**

Super-fast 2D inspection and image analysis with advanced capabilities for coating, dispensing, component insertion, THT, and wave soldering process lines.



**WORLD'S BEST  
PRODUCTIVITY**



## [SNAPCURE]

## [WORLD'S BEST EFFICIENCY]

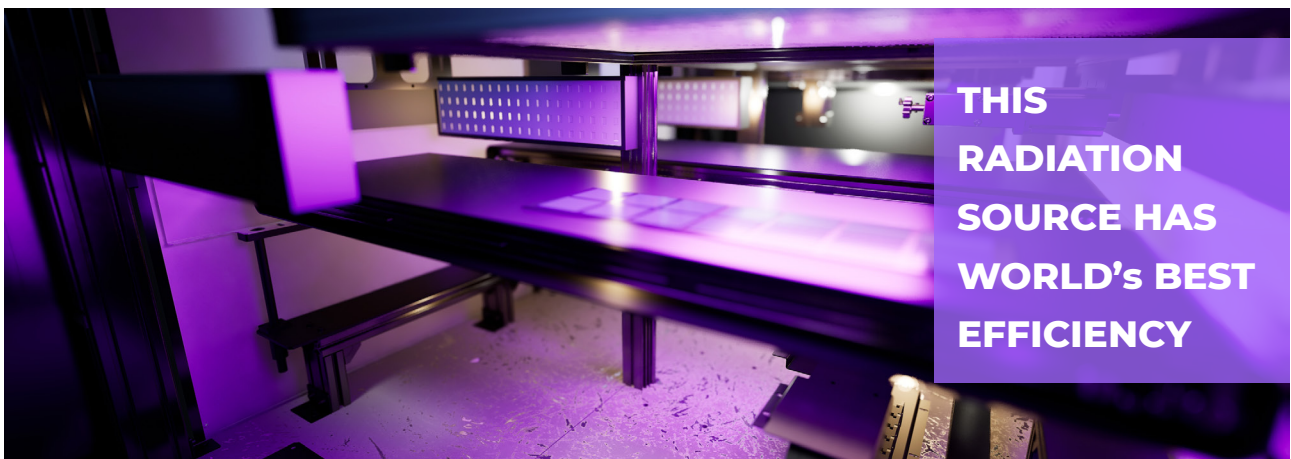
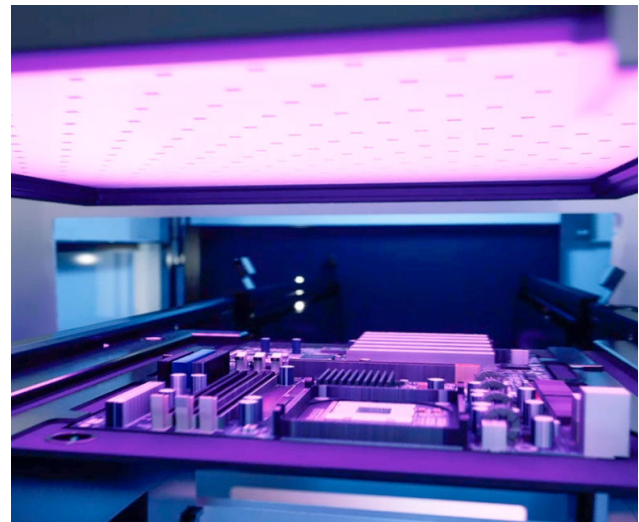
### FEATURES

- Up to two lamps:
- Lamps size: 250 x 400 mm or 500 x 400 mm
- Single wavelength IR LED 810 nm.
- Single wavelength UV LED 275 nm, 365 nm or 395 nm.
- Multi wavelength UV LED lamp 275 nm, 365 nm and 395 nm.
- Guaranteed lifetime 20.000 hours.
- Optional chamber (Vacuum / N2).



### MULTI-WAVELENGTH OPTIONS

- **UVA & UVC combined radiation panel as a Mercury alternative process solution:**
- **UVLED Lamps:** 254 nm -> 805 nm.
- **Patented** combo wavelength management.
- **Patented** secondary parameter process management.
- **Active radiation panel:** 250x400 mm / 500x400 mm / 500x800 mm.



**THIS  
RADIATION  
SOURCE HAS  
WORLD'S BEST  
EFFICIENCY**

# GLOBAL NETWORK



 PART OF INCORPORATECHNO

[WWW.MSTECHCORP.EU](http://WWW.MSTECHCORP.EU)

**FACTORYCENTER**  
BARCELONA - SEOUL

**BUSINESSCENTER**  
AMERICA - EUROPE - AFRICA - ASIA

**TESTCENTER**  
SPAIN - KOREA

**FACTORYCENTER**  
BARCELONA

Carrer de la Masia en Notari, 4, 08800  
Vilanova i la Geltrú, Barcelona. Spain

[administrative@mstechcorp.eu](mailto:administrative@mstechcorp.eu)

**BUSINESSCENTER**

[sales@mstechcorp.eu](mailto:sales@mstechcorp.eu)

[services@mstechcorp.eu](mailto:services@mstechcorp.eu)

