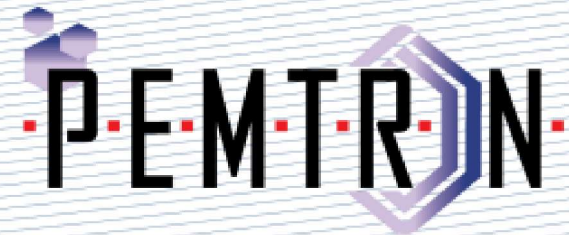


# ZEUS

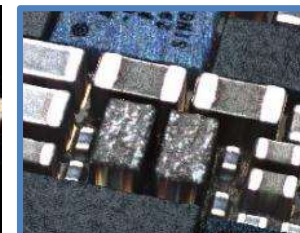
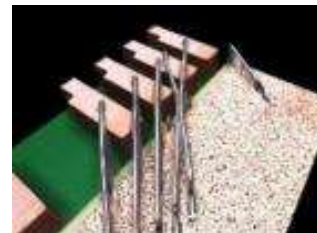
High Resolution Inspection



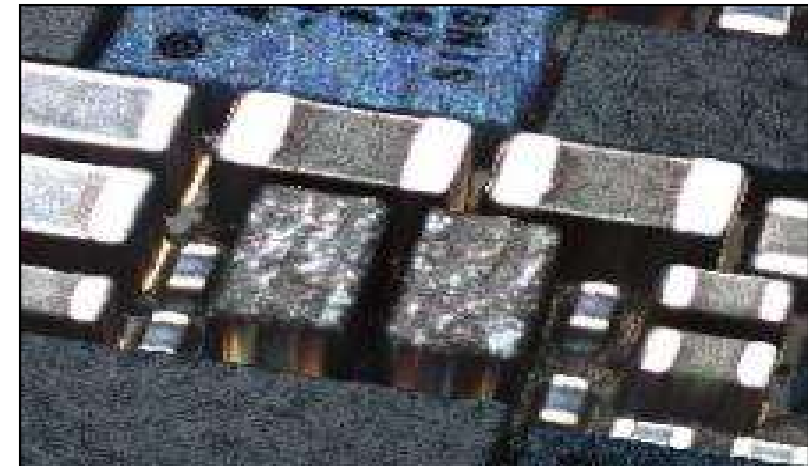
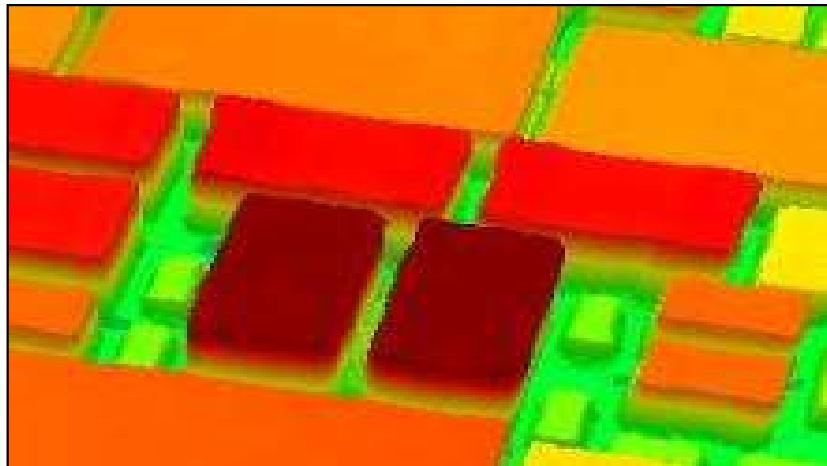
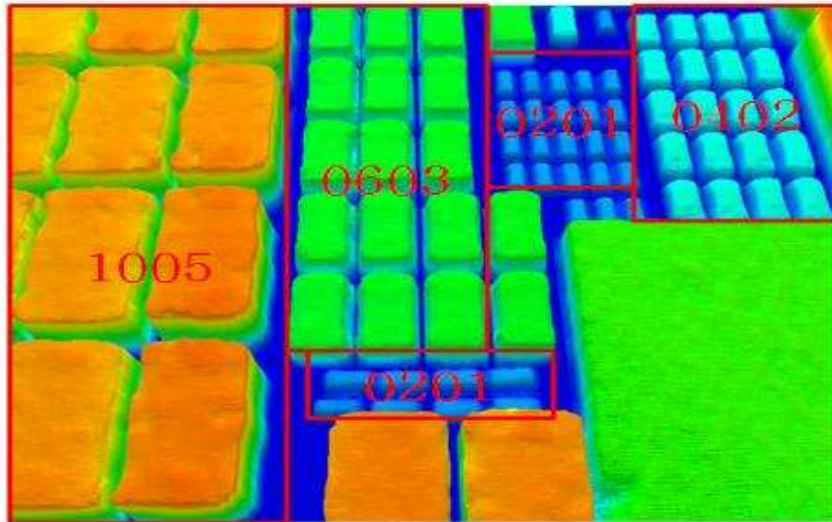
# ZEUS – high resolution inspection



- Advanced High Speed Inspection and Measurement Technology
  - 8 way Projection + 3 Stage RGB
  - 3D simultaneous algorithm
  - - Telecentric Lens for optimal accuracy
- Lean & Efficient full line control capability
- Proven world best 3D imaging quality
- Absolute world most innovative & flexible solutions
- Unique 3D technology not possible anywhere else
- Convenient Teaching by using existing Algorithm

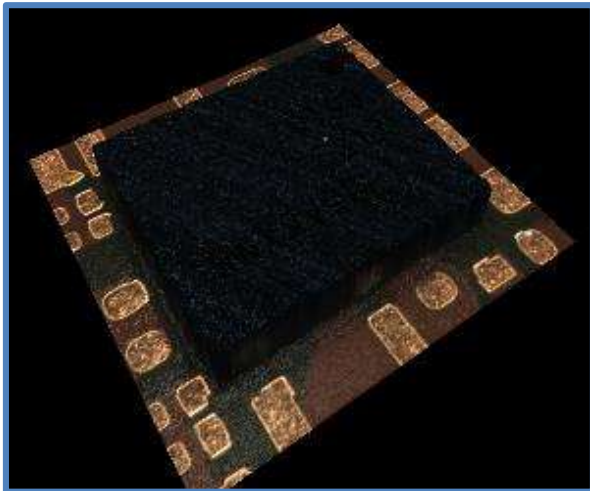


## Small component 3D-Inspection

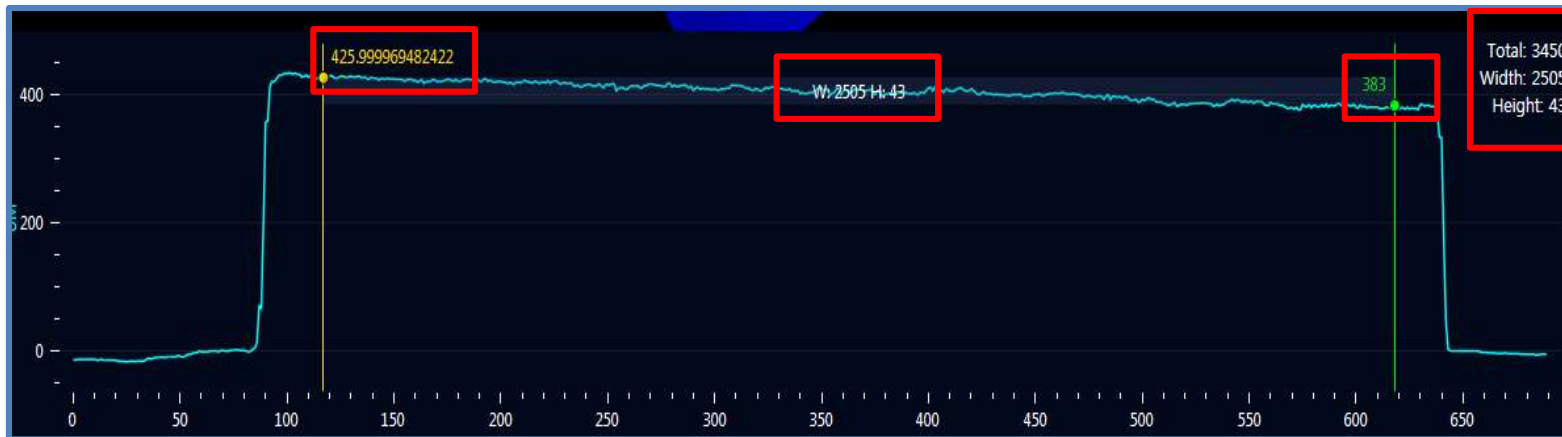
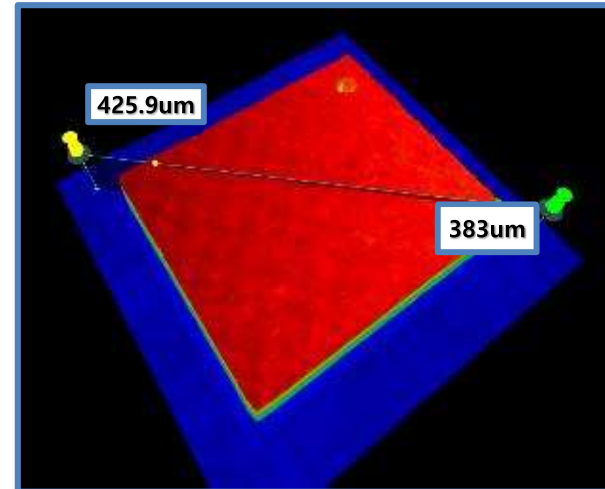


## Die package 3D-Inspection (5,5 µm res.)

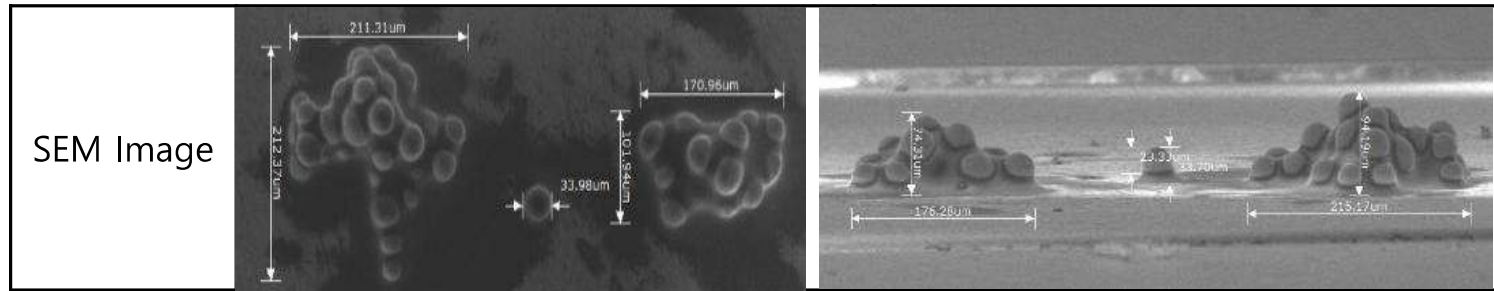
Photographic View



Topographic View



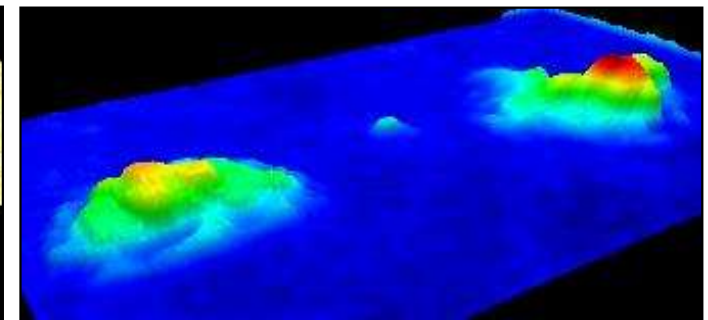
## Solder Ball 3D-Inspection (2,3 μm res.)



2D Image



3D Image

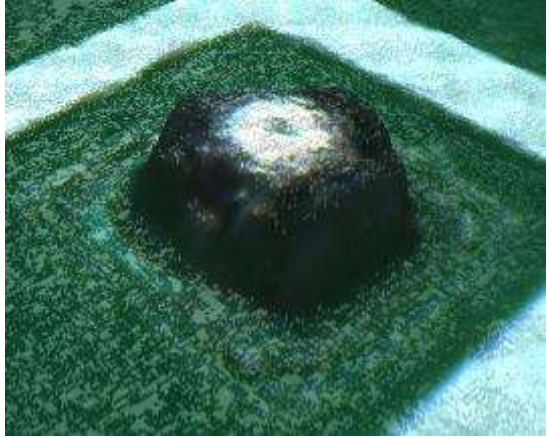
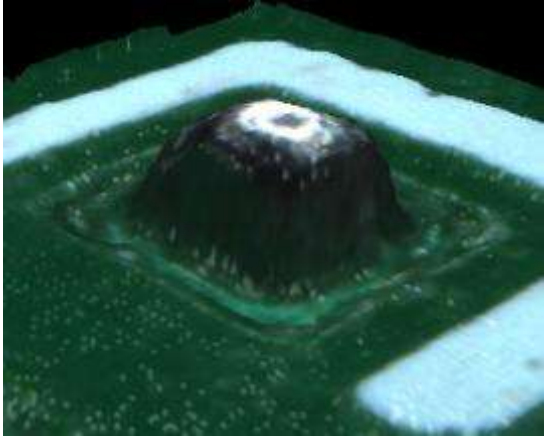
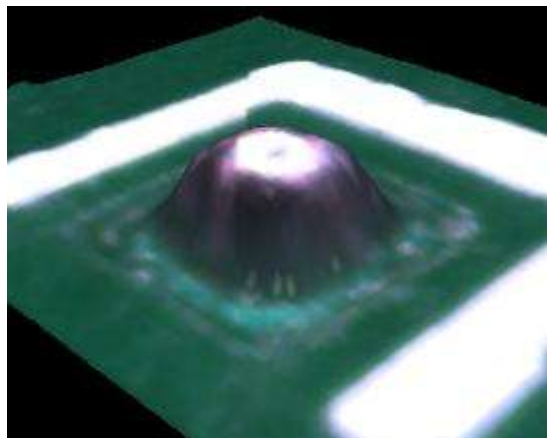
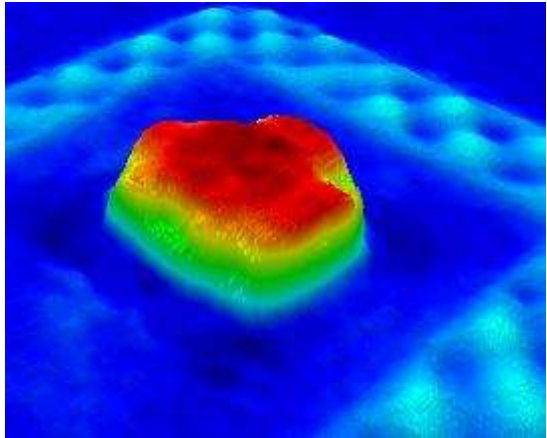
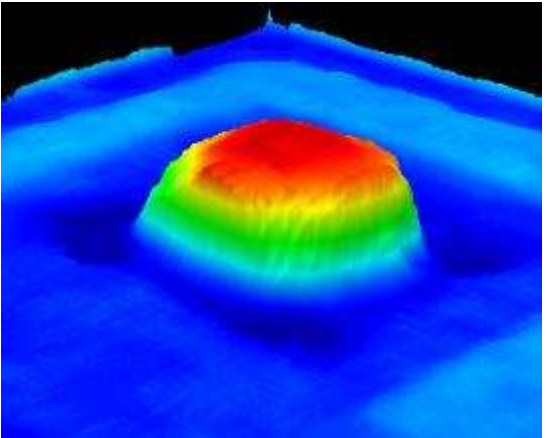
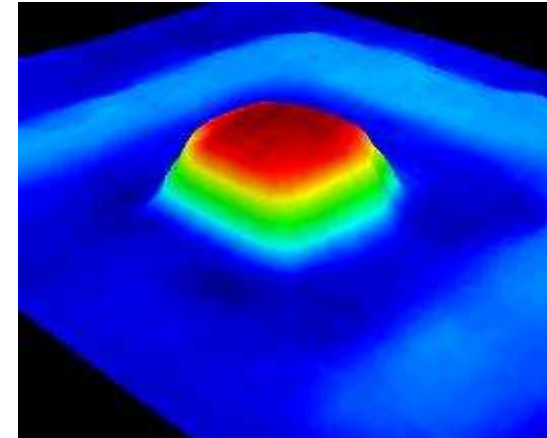


topographic Image

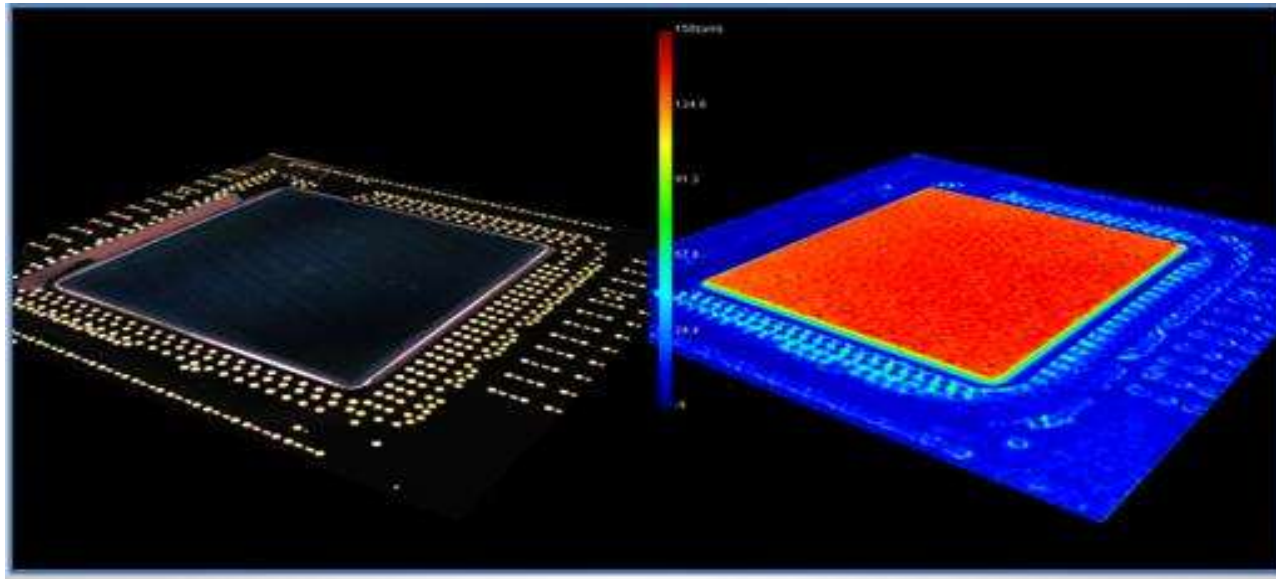


# Application sample

## Chip solder 3D-Inspection (different res.)

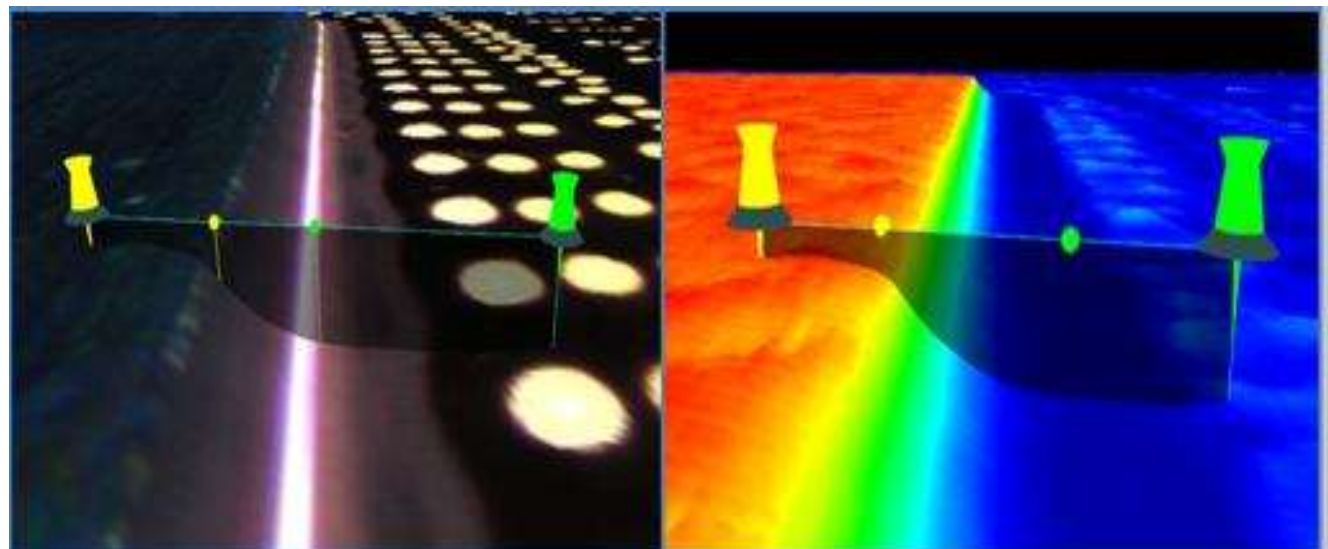
	2.3um	5.5um	10um
Real 3D Image			
Color 3D Image			

# Application sample

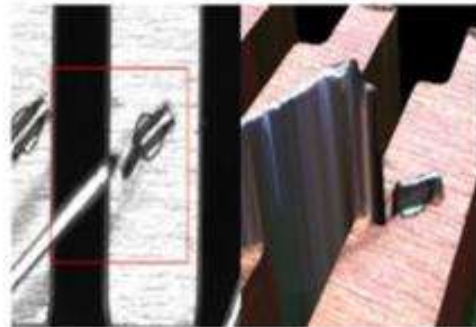


**Die & Under Fill 3D Inspection**

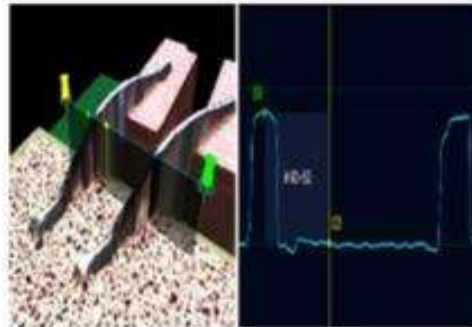
---



## Inspection Capabilities – Wire Bonding



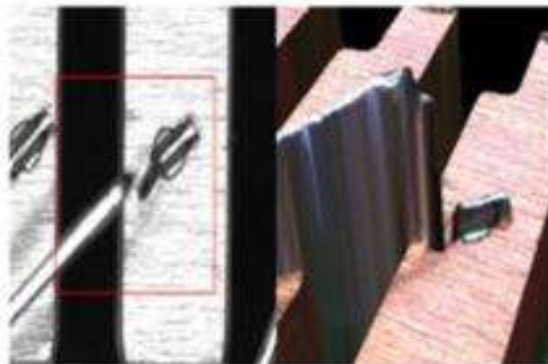
**WIRE BROKEN**



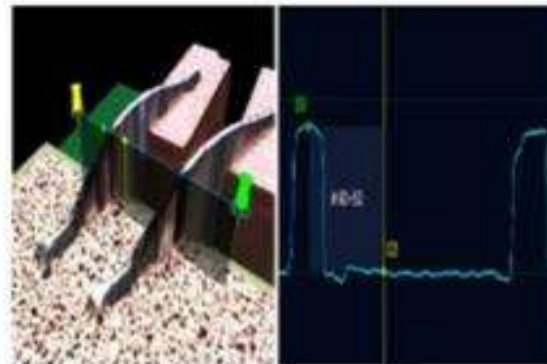
**LOOP HEIGHT**



**FOOT FLATTENED**



**WIRE BROKEN**

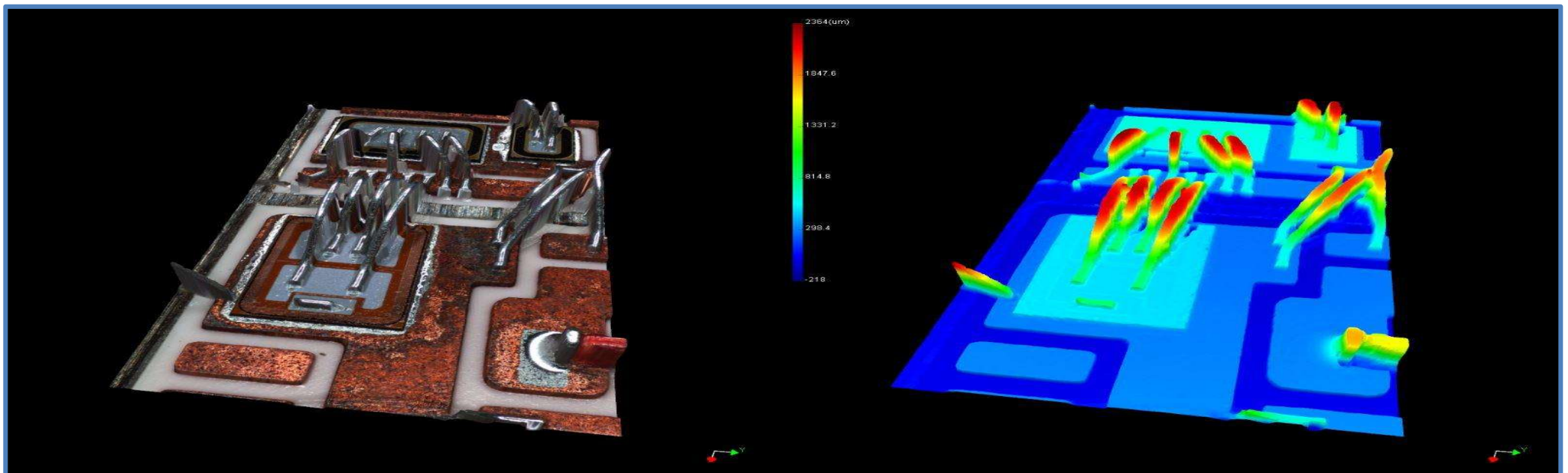
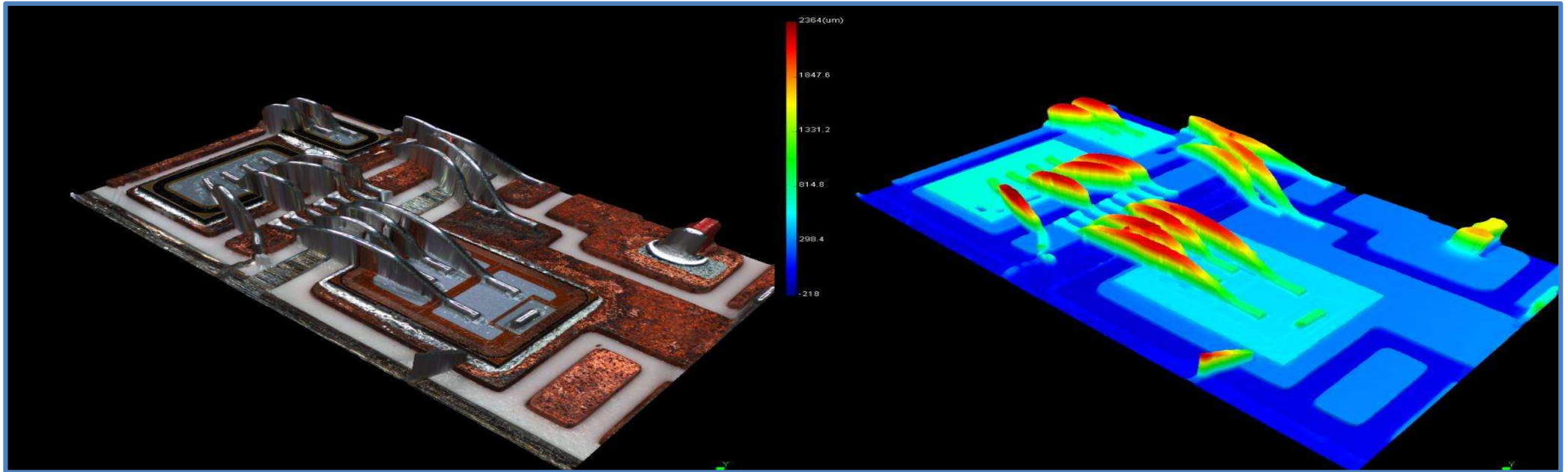


**LOOP HEIGHT**

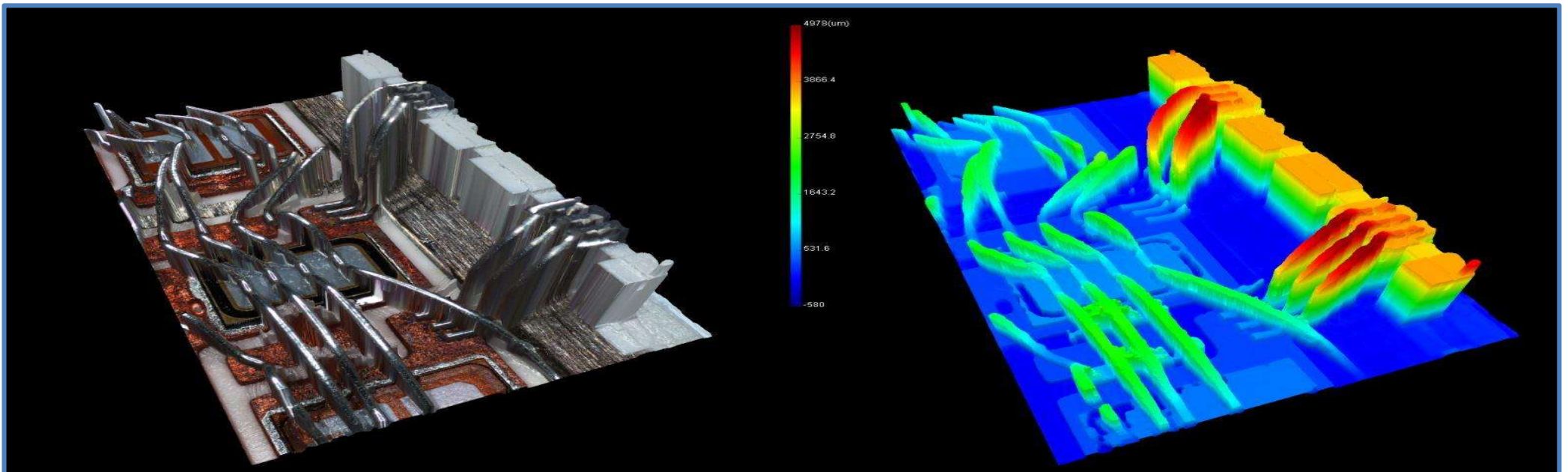
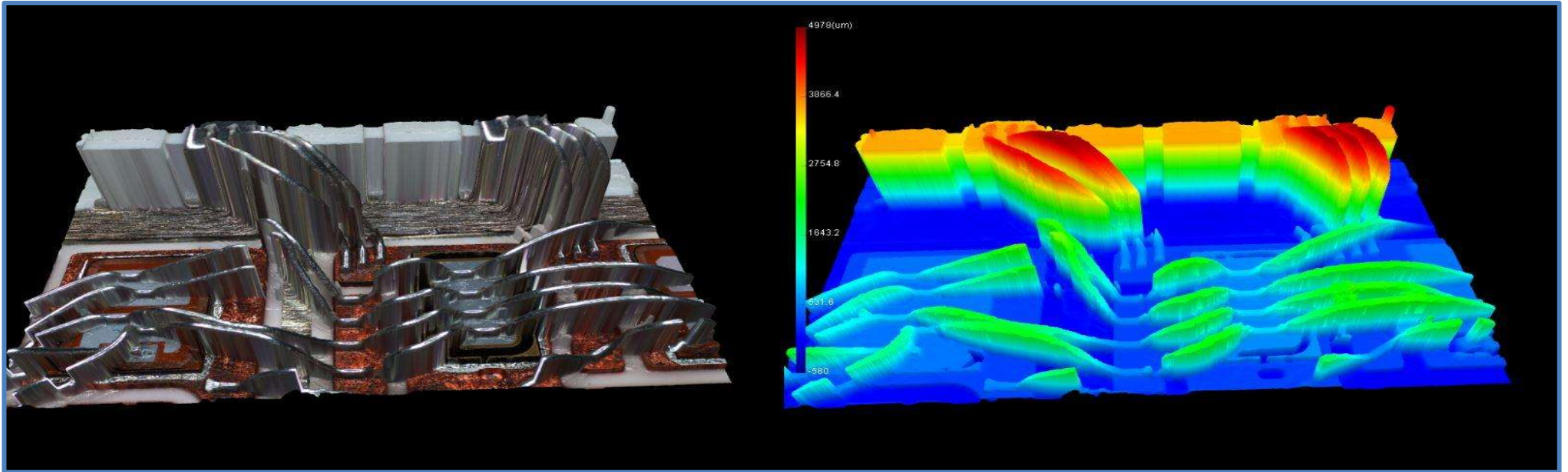


**FOOT FLATTENED**

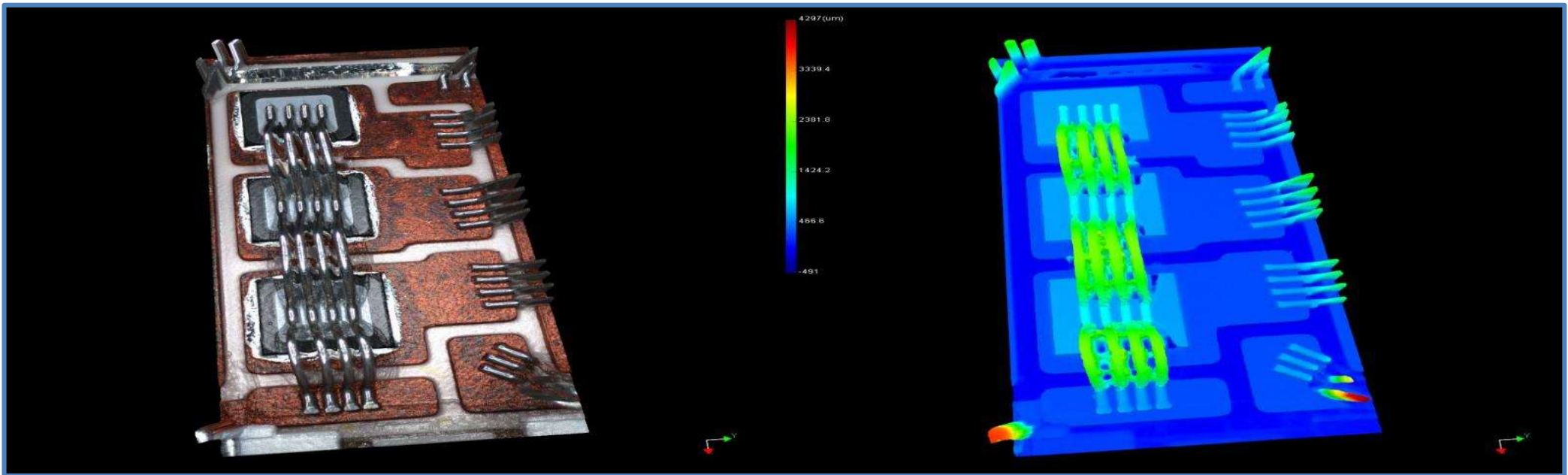
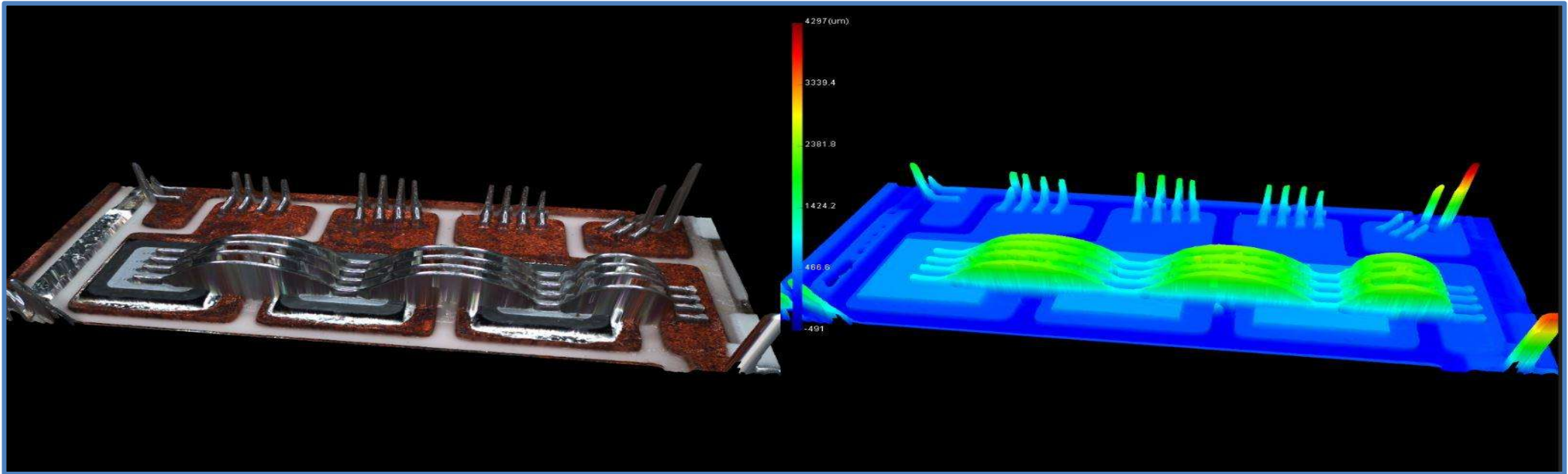
# 3D images



# 3D images



# 3D images



# Standard Specification



Camera	12 Mega Pixel	12 Mega Pixel	12 Mega Pixel	12 Mega Pixel
<b>Resolution</b>	<b>10um</b>	<b>5.5um</b>	<b>2.3um</b>	<b>1.1um</b>
3D Light	10-Way Projection	10-Way Projection	10-Way Projection	10-Way Projection
2D Light	3set RGB Light	3 set RGB + Coaxial Light	3 set RGB + Coaxial Light	3 set RGB + Coaxial Light
FOV	43 x 31mm	23 x 17mm	10 x 7mm	4.5 x 3.5
Speed	24.94 cm <sup>2</sup> /sec	7.82 cm <sup>2</sup> /sec	1.3cm <sup>2</sup> /sec	0.3cm <sup>2</sup> /sec