

# Productivity at Work.

## Delivering UPH and Precision



## Forte™ Series

### Advanced Dispensing

The new Forte™ Series supports a wide range of applications — fusing leading technologies from our most advanced fluid dispensing system with proven features from our top selling dispensing platform. With a highly stable chassis and newly designed electrical and mechanical architectures, the Forte™ Series delivers UPH gain through swift acceleration and improved motion control. Added stability in the chassis accommodates high-speed motion in the x, y, and z axis without sacrificing placement accuracy.

A dual-valve-ready design allows you to run two high-frequency IntelliJet® Jetting Systems simultaneously to further boost UPH and quality outcomes — reducing dispense time by half and automatically adjusting for workpiece and individual component rotational skew.

Canvas® software delivers a completely new interface to simplify programming tasks and provide powerful insight and control over your process.



## Forte™ Series provides:



Improved cost-of-ownership, equivalent or better accuracy and 20-50% higher productivity over the top selling Spectrum® II



Reduced operator maintenance and intervention with standard integrated dual-valve service station, patented closed-loop process controls and nozzle cleaning rail



Blazing speed for point-to-point moves – matching our most advanced fluid dispensing system at 1.5 G



Maximized production floor efficiency — space saving footprint



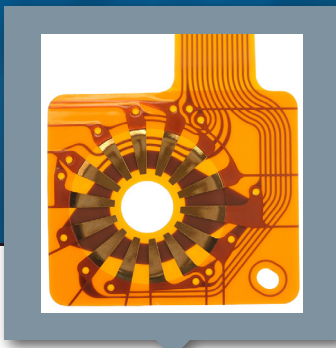
Higher throughput and accuracy with simultaneous dual-valve jetting and patented\* real-time correction for x, y, and z-axis substrate skew



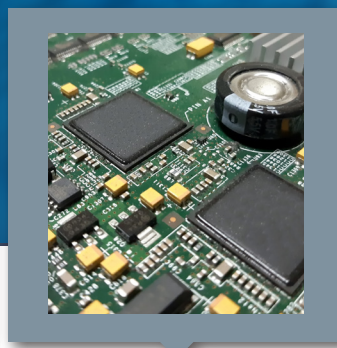
Flexible range of applications: Flex circuit assembly, PCBA, EMA, MEMS, Underfill, Precise Coating, and Encapsulation

\*Nordson US Patents 9,707,584 and 10,150,131 and other patents pending.

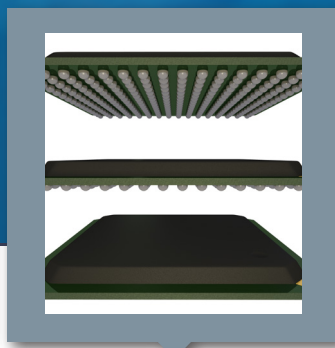
## Application Highlights



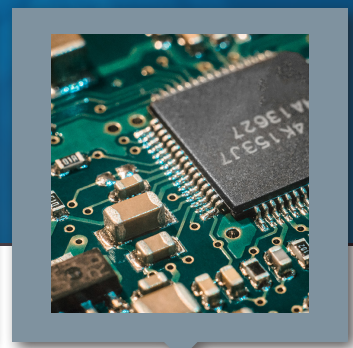
Flex Circuit Assembly



Encapsulation

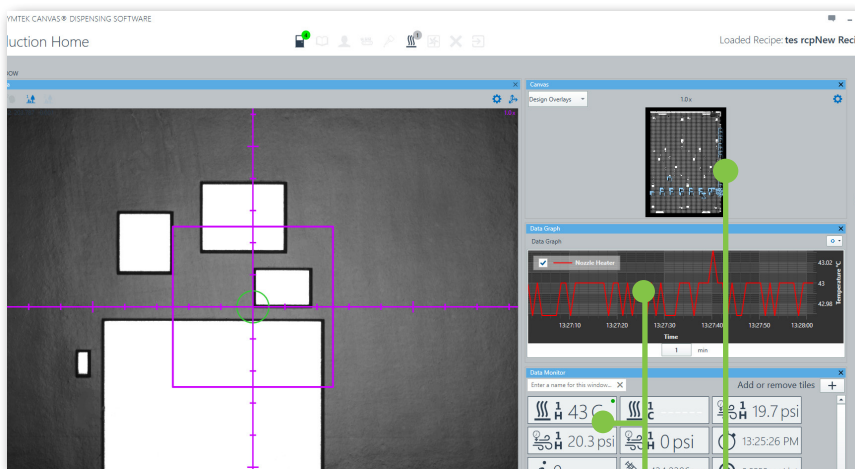


Underfill



PCBA

## Canvas® Software



Graphing and Data Tiles  
Canvas Graphical Programming

**A completely new software interface** that simplifies programming tasks and provides powerful insight and control over your process

**Graphical Programming** – lets you scan a workpiece, develop your program on or offline, and simulate the dispensing results on a virtual canvas

**Guided Wizards** – provide easy step-by-step setup instructions

**Quick-Reference Graphing and Data Tiles** – allow you to control how system sensor and process data are displayed

Contact us.

Visit our website to find your local representative or regional office.

North America Headquarters  
2747 Loker Avenue West  
Carlsbad, CA, USA 92010-6603  
+1.760.431.1919  
www.nordsonasymtek.com

China  
Shanghai  
Beijing  
Guangzhou  
Taiwan

Japan  
Tokyo  
Korea  
Seoul

Southeast Asia/Australia  
Singapore  
Europe  
Deurne, Netherlands  
India  
Chennai