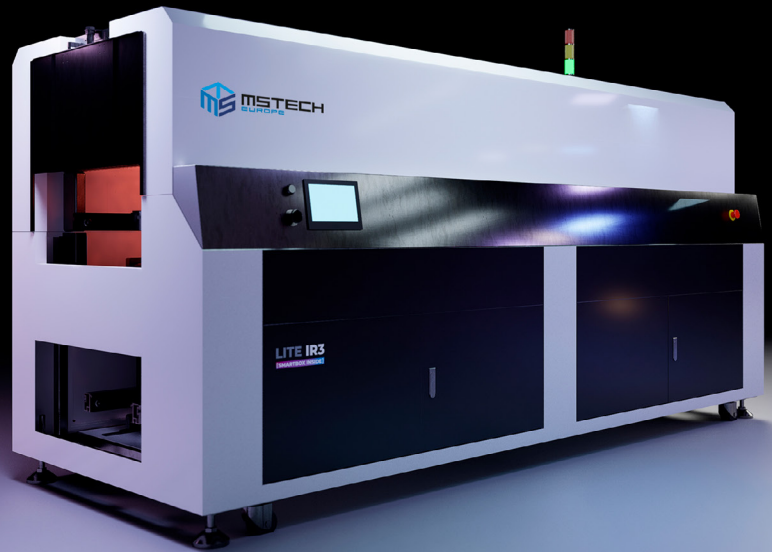


LITE IR

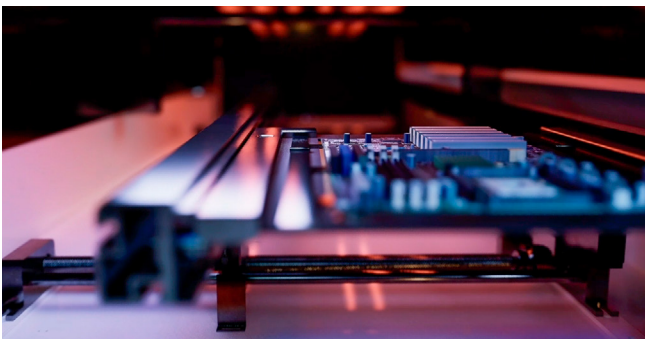
INFRARED MULTI-ZONE CURING OVEN



MAXIMUM PRODUCTIVITY AND PERFORMANCE

LITE IR product line provides a lean and efficient process for curing various materials using a combination of IR and convection heat sources.

Lean design, maximum productivity and performance.



UNIQUE CONCEPT

CONFIGURATION FLEXIBILITY

- LITE IR 1: 800 mm / LITE IR2: 1800 mm / IR3: 2800 mm / IR4: 3800 mm.
- Concept modular line.
- InLet/OutLet shutters standard.
- IR Radiation and combined convection

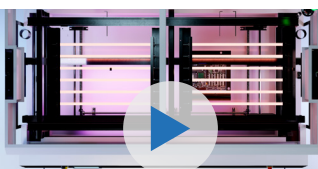
FULL INTERCONNECTED TRACEABILITY [SMARTBOX] OPTION

- Process Tracker embedded software platform with on demand communication & KPI definition.
- Live process parameters log.
- Embedded trend analysis.

OPTIMIZATION

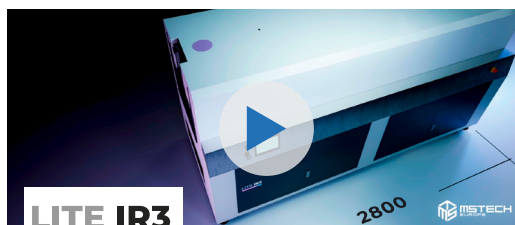
- Floor space & facility savings.
- Energy efficient.
- Any size variants can be accommodated by model's alignments.

OPTIONS



LITE IR2

1800



LITE IR3

2800

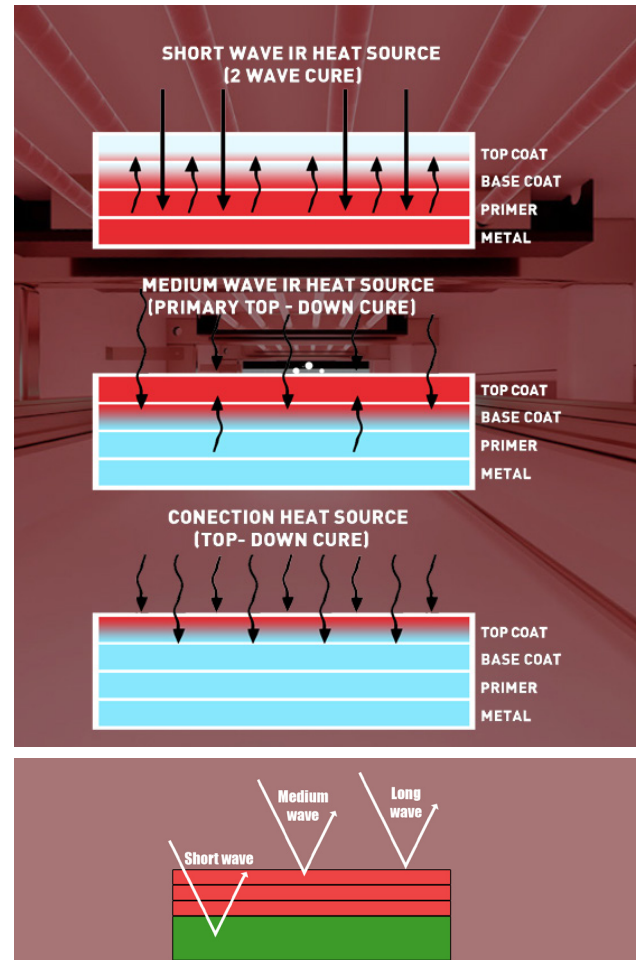


LITE IR4

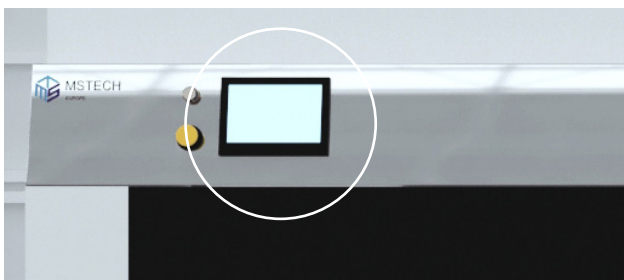
3800

FEATURES

- **Adjustable speed:** Transmission system uses an adjustable speed of 100-2000 mm/min.
- **Electric power supply:** Voltage supply: 3-phase, 380VAC, 50/60Hz.
- **Automated width adjustment:** Programmable conveyor width adjustment.
- **Short wave IR heat source** for optimized productivity and collateral convection for profile stability.
- **InLet/OutLet Shutters:** to increase thermal stability, reduce energy consumption and optimize safety.



PROCESS MONITORING

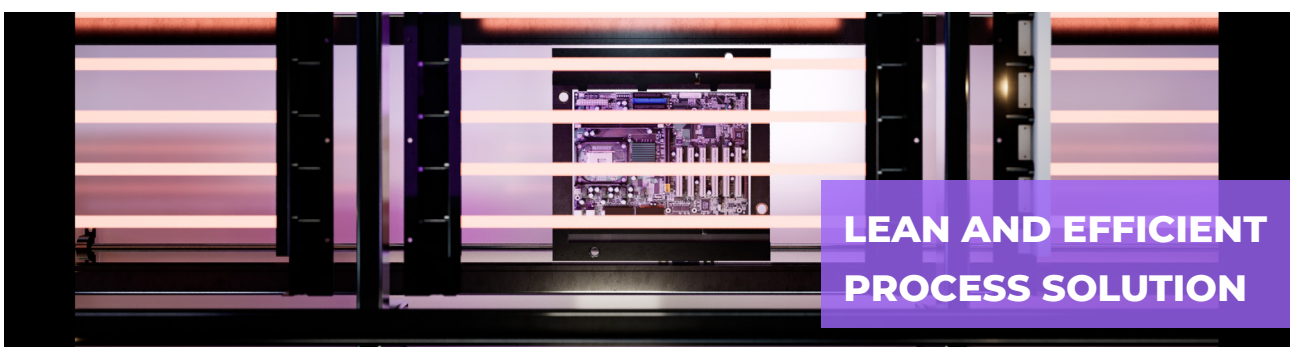


Throughout the protection process the PLC module monitors the loading and unloading operation, board location and exhaust ventilation for possible solvent-based protection processing.

SAFETY



Safety interlocks prevent the doors from opening during operation.
Pneumatic safety shutter.

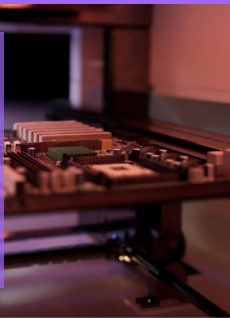


OPTIONS

- » Patented digital radiation module with global close looped thermal imaging of the product.
- » Patented selective heat.
- » VOC filtering management.
- » Auto adjust extraction Air Flow based on VOC density.

APPLICATION

Preheating and curing of underfill, potting, glue, corner bonding, thermal paste, gap filler, coating, ink.



PROCESS MONITORING OPTIONS

- » Emitters temperature.
- » Product temperature.
- » Process cabinet temperature.
- » Process cabinet humidity.
- » ESD level.
- » Others on demand.

Thanks to our, **[SMARTBOX]** all recorded data can be shared with an MES/FIS environment and displayed through our embedded Process Tracker, providing enhanced process capability visibility via a local KPI display system.

[SMARTBOX]



HUMIDITY



TEMPERATURE



INDUSTRY 4.0



PROCESS TRACKER

SPECIFICATIONS

Conveyor segments	1 for top and 1 for bottom conveyor
Function control	PLC control HMI size: 5" (800x480 px)
Conveyor speed	Adjustable speed at 100-2000 mm/min.
Irradiation zones	2, 3 or 4 zones
Temperature	Standard: 60 °C-120 °C, up to 200 °C under requirements
Average temp. tolerance	+/-5 °C
Direction	L->R (Option: R->L)
Board length	50 mm min. – max- 50% of oven length
Board width adjustment	50-540 mm
Conveyor clearance	150 mm top and bottom
Conveyor max. payload	≤ 12.0 kg/m (24 lbs.) max.
Board/pallet thickness	0.6 mm min.
Board/pallet warpage	3 mm max. overboard width
Board Counter	Yes
Heater length	IR2: 1800 mm / IR3: 2800 mm / IR4: 3800 mm
Transportation system	Dual stainless chain edge transportation system
Transport edge width	5 mm per side (35B stainless steel chain)
Conveyor height	914-991 mm SMEMA
Module dimensions (LxWxH)	IR2: 1800x1230x1400 mm / IR3: 2800x1230x1400 mm / IR4: 3800x1230x1400 mm
Voltage	3-phase, 380VAC, 50/60Hz
Working power consumption	IR2: 4 kW / IR3: 6 kW / IR4: 8 kW
Power for warm up	IR2: 9 kW / IR3: 15 kW / IR4: 18 kW
Weight approx.	IR2: 450 kg / IR3: 650 kg / IR4: 850 kg

GLOBAL NETWORK



 PART OF INCORPORATECHNO

WWW.MSTECHCORP.EU

FACTORYCENTER
BARCELONA - SEOUL

BUSINESSCENTER
AMERICA - EUROPE - AFRICA - ASIA



FACTORYCENTER
BARCELONA

Carrer de la Masia en Notari, 4, 08800
Vilanova i la Geltrú, Barcelona. Spain

administrative@mstechcorp.eu

BUSINESSCENTER

sales@mstechcorp.eu

services@mstechcorp.eu



MSTECH Europe is part of Incorpora Techno Group