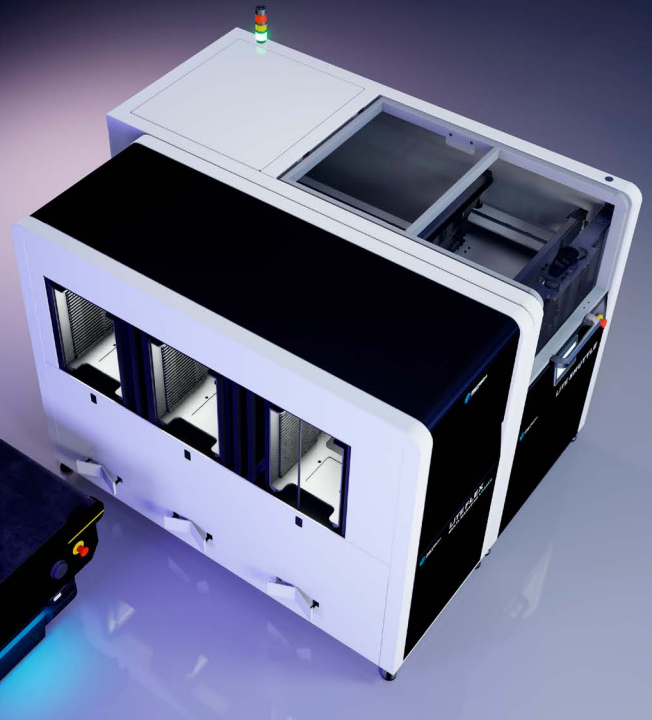


LITE FLEX MULTI LOADER

**AUTO WIDTH ADJUSTABLE
MAGAZINE CONVEYOR
FOR 4 DIFFERENT SIZE
MAGAZINE RACK**



AUTOMATIC MULTI-MAGAZINE LOADER (UP TO 3 UNITS)

Auto width-adjustable magazine conveyor for four different magazine rack sizes.

The loading station **LITE FLEX MULTI LOADER** is designed to automatically feed PCBs into an SMT production line or into individual process machines such as depaneling, soldering, PCBA protection, backend, or test systems. PCBs are extracted from the magazine by an extraction mechanism and transferred onto the handover conveyor. This conveyor moves laterally on an integrated shuttle to the handover position, where the PCB is then transferred to the next stage.

UNIQUE CONCEPT

CONFIGURATION

- Dimensions (W x D x H): 1500 x 2050 x 1648 mm
- Conveyor direction: L -> R | R -> L.
- Multi sensors optional (ESD humidity, temperature, etc.).
- Data matrix / Bare code reader optional.
- AGV / AMR interconnexion optional.

FULL INTERCONNECTED TRACEABILITY [SMARTBOX] OPTION

- Process Tracker embedded software platform with on demand communication & KPI definition.
- Live process parameters log.
- Embedded trend analysis.

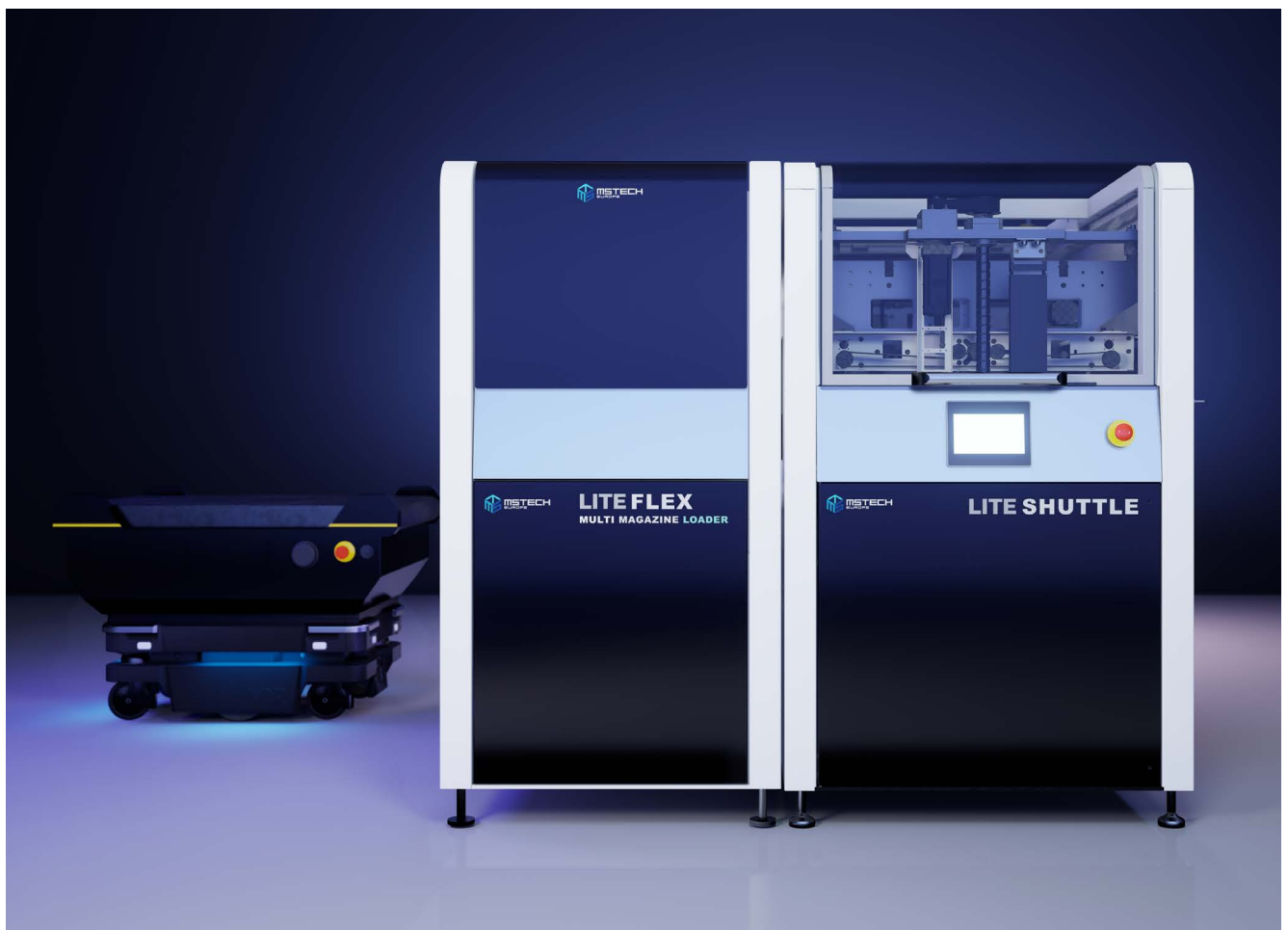
OPTIMIZATION

- Energy efficient.
- Eco-friendly.

LITE FLEX MULTI LOADER

The system is characterized by its **durable and reinforced welded chassis**, which ensures a rigid and robust structure. It offers high resistance to deformation, supports heavy loads, and is more reliable under extreme conditions due to its solid construction. Its compact design also reduces maintenance requirements.

The **magazine table** allows easy access to the magazines while meeting high safety standards. Magazine exchange during operation enables continuous loading without interruptions. The **integrated shuttle mechanism** allows fast switching between different magazine types and handover positions in just seconds.



Magazine Rack Size:

- » 350 x 320 x 563 mm.
- » 460 x 400 x 563 mm.
- » 535 x 460 x 570 mm.
- » 535 x 530 x 570 mm.



FEATURES

- » Automatic switching to the second magazine.
- » Transfer conveyor with integrated shuttle mechanism.
- » Vertical magazine clamping system for multi-size magazine racks.
- » Quick and simple changeover for different magazine types.
- » Flexible takeover position for easy machine setup.
- » Front access to magazines for user convenience.
- » Touch display with intuitive graphical user interface
- » Product parameters adjustable during operation.
- » Product memory function for fast setup and repeatability.

FACILITY REQUIREMENTS

Dimensions (WxDxH) 3 racks	1500 x 2050 x 1648 mm
Approx. weight	700 kg
Voltage	230 VAC
Transmission type	Chain or belt conveyor
SMEMA height	940-965 mm
Power	2.5 kW
Flow direction	L -> R R -> L
Fixed rail	1 front rail
Signal	SMEMA
Edge clearance	5 mm

PROCESS MONITORING OPTIONS

- » Offline programming.
- » Remote control platform.

Thanks to our, **[SMARTBOX]** all recorded data can be shared with an MES/FIS environment and displayed through our embedded Process Tracker, providing enhanced process capability visibility via a local KPI display system.

[SMARTBOX]



INDUSTRY 4.0



PROCESS TRACKER



PART OF INCORPORATECHNO

FACTORYCENTER
BARCELONA - SEOUL

BUSINESSCENTER
AMERICA - EUROPE - AFRICA - ASIA



FACTORYCENTER
BARCELONA

Carrer de la Masia en Notari, 4, 08800
Vilanova i la Geltrú, Barcelona. Spain

administrative@mstechcorp.eu

BUSINESSCENTER

sales@mstechcorp.eu - services@mstechcorp.eu

WWW.MSTECHCORP.EU

