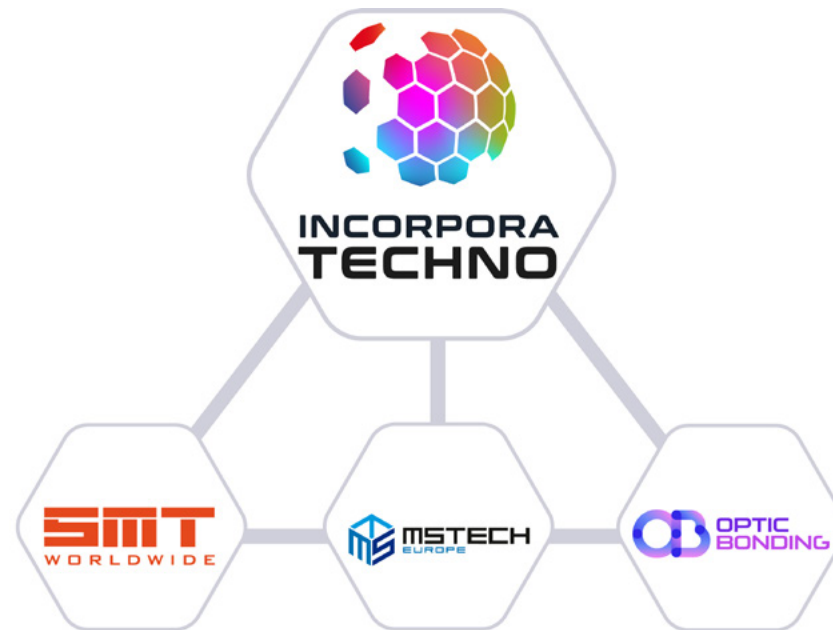


STT
WORLDWIDE



SMT Worldwide is part of the group of companies called Incorpora Techno

Incorpora Techno Group gathers independent companies truly exceptional. Every one of these companies creates products or brings highly qualified services that represent an unique know-how, a heritage carefully preserved and a dynamic commitment to modernity.



**This union
makes our leader
companies in our
sector a unique
global solution.**

www.incorporatechno.com
www.smtworldwide.com • www.mstechcorp.eu • www.opticbonding.com

Income Growth and Human Resources

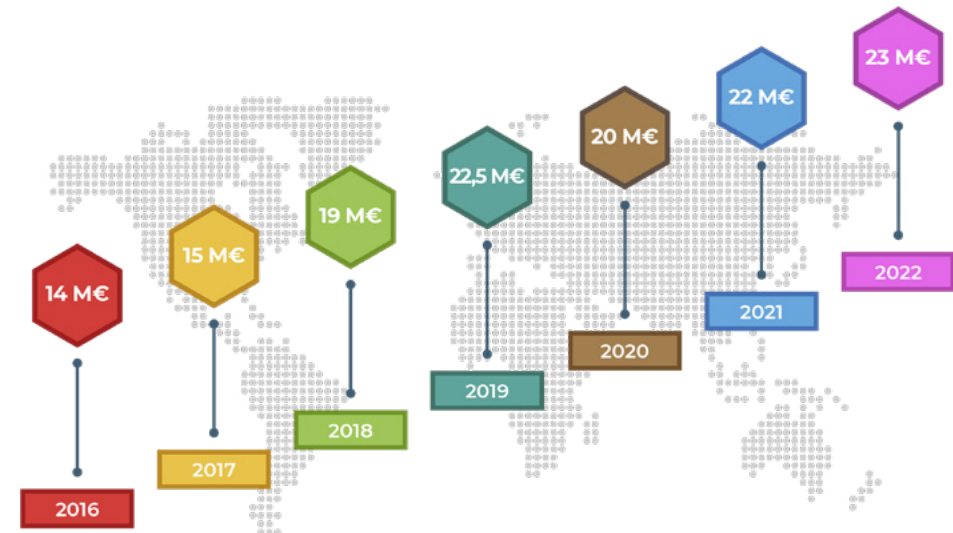
Evolution Human Resources

Incorpora Techno Group and its companies: SMT Worldwide, MSTECH Europe and Optic Bonding has over 114 employees worldwide.



Evolution Financial Resources

Billing progressive in recent years.



More than 20 years in business and is a leading provider in the global manufacturing industry of electronic products.



SMT Worldwide is a technology partner that operates globally serving the electronics and semiconductors industry with commercial services and specialized technical support.

We provide a key interface between clients and equipment manufacturer brands that offer leading products and services in the market to guarantee an excellent **commercial service and technical support** with the highest quality of solutions offered.

SMT Worldwide is present all over the world, working closely with industry suppliers, suitable for different markets in terms of technology, flexibility and highly qualified experience.



SMT WorldWide staff has over 20 years experience in the Industry. Our main target is to help our customers and support our principals' growth.

OUR JOB:

- To understand our customers' needs
- Matching customer needs/ principals' technologies
- Managing customer accounts professionally
- Supporting our customers
- Delivering a clear message
- Facilitate and enrich communication

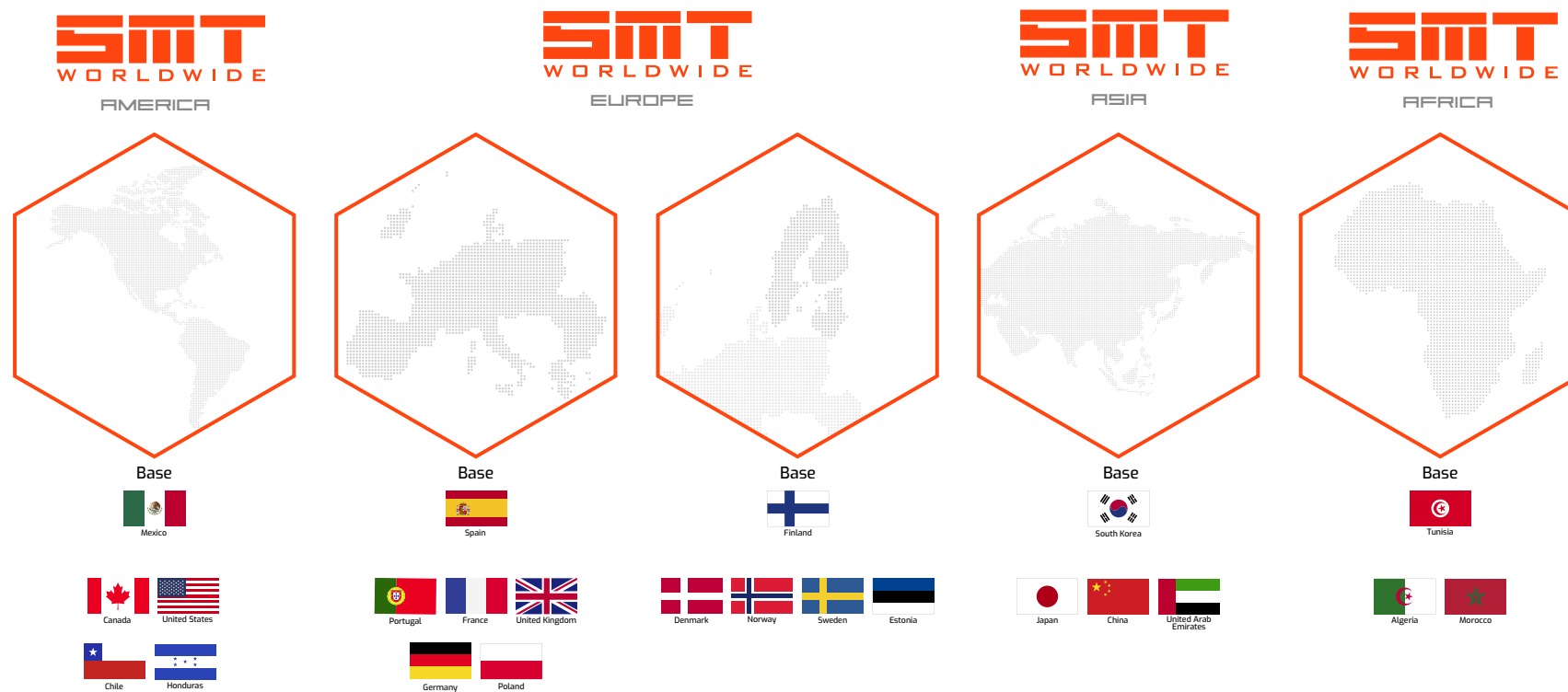
OUR SEVEN PRINCIPLES

- Adaptability
- Untiring Effort for Improvement
- Gratitude
- Courtesy and Humility
- Fairness and Honesty
- Cooperation and Team Spirit
- Contribution to Society

OUR ADDED VALUE:

- Experience
- Support
- Expertise

OUR PRESENCE IN THE WORLD



Commercial and technical support around the world



We provide

Our relationships are based on years of trust and support with a direct relationships with headquarters.

Inline Solutions
Application and Demo Center
Logistic Center
Local Support
Spare Parts Center
Leasing and Financing Services

**We have turnkey solutions
for your business!**

Trust and professional care for your project and needs



**Technical
Support**

**Instalation and
Commisioning**

**User
Training**

**After Sales
Service**

Maintenance

New manufacturing and exhibition center
for equipment and machinery in PCB assembly line

We are betting on the incorporation and union of global technologies with a large investment in human and economic resources to lead and be a reference company in industry 4.0 on a global scale.

**15.700 m2 of
Demo Smart
Factory just
40 km from
Barcelona**



30' from
El Prat Airport



Easy access
by motorway



Bus and train
easy access

Pioneer in Europe, unique in worldwide

- Prototype line for test trials and small productions of PCB manufacturing
- SMT-SMD-THT lines
- Backend Line
- Storage Solutions – Consumables & Material Management
- Automation through Artificial Intelligence
- Demo-Laboratory
- Application and Demo Center
- Logistic Center
- Local Support
- Spare Parts Center
- Leasing and Financing Services
- Training consulting services by our expert engineers

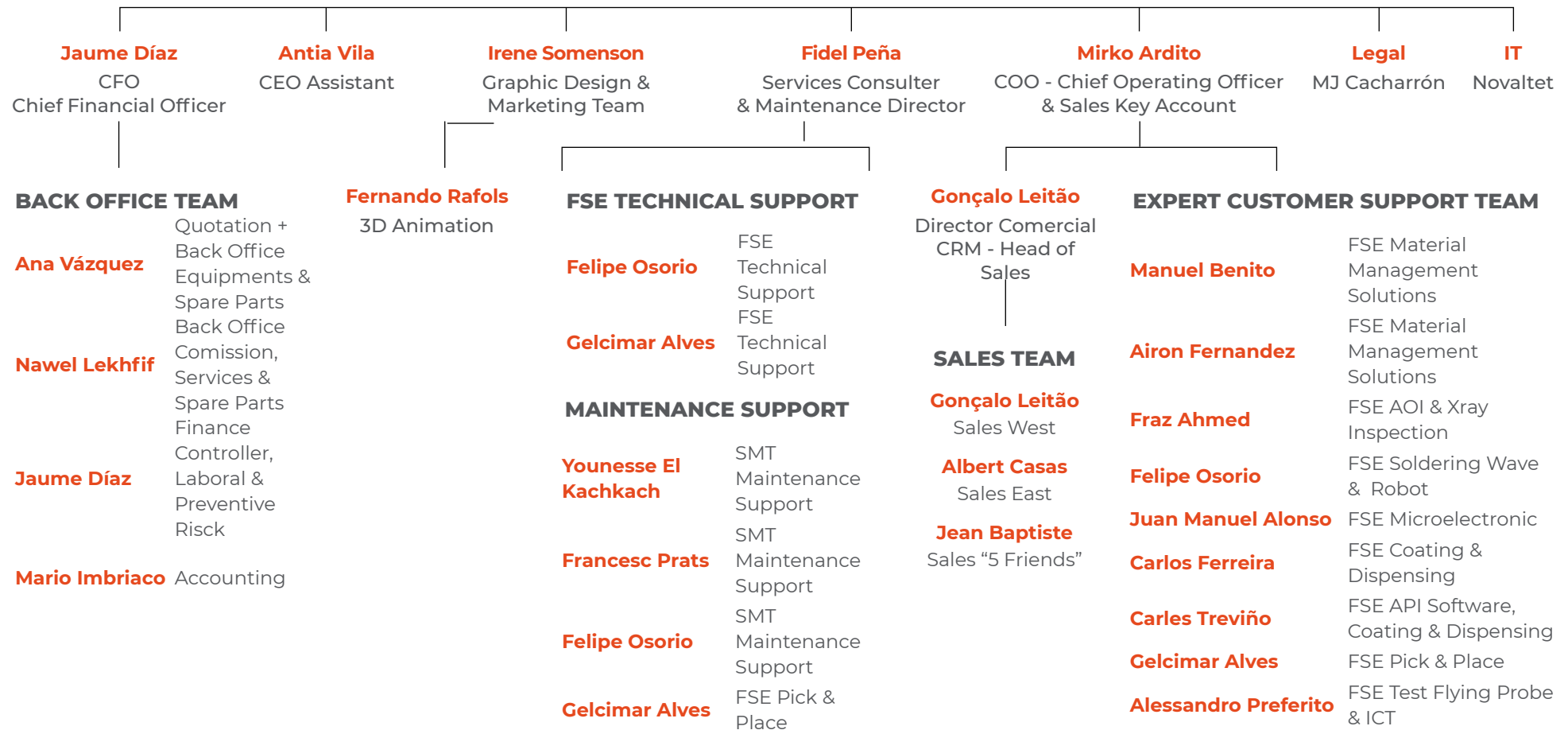


EUROPE ORGANIZATION

Your success our talent



Jean Baptiste Bénard
Group CEO & Founder

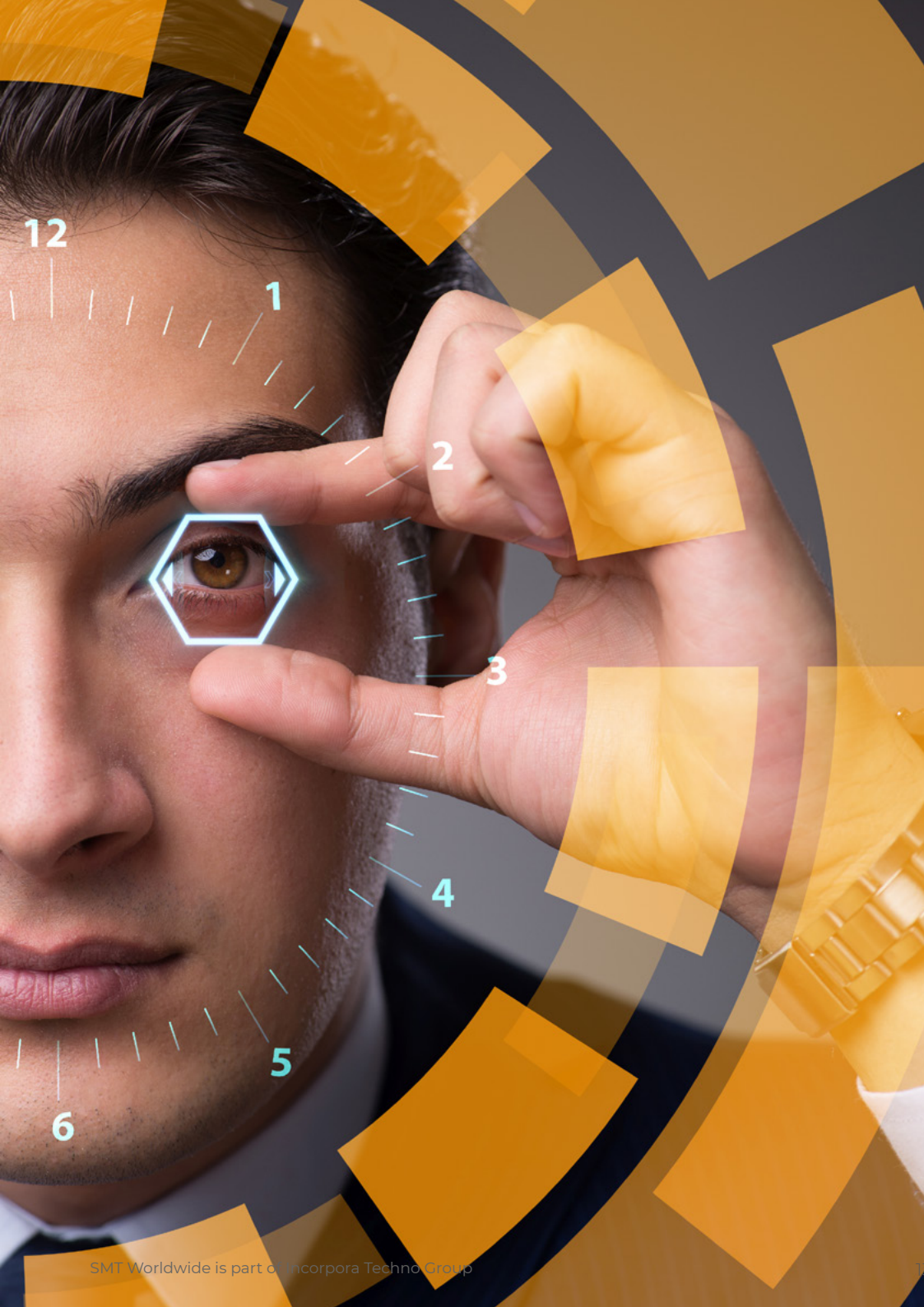


SUPERIOR FUNCTION DESIGNS

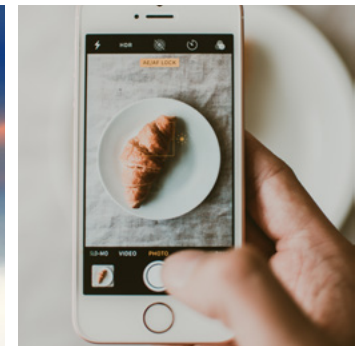
We have turnkey solutions for your business!



CONSUMABLES	MATERIAL MANAGEMENT	ELECTRONIC ASSEMBLY	TEST EQUIPMENT	DEVICE PROGRAMMING	BACKEND ASSEMBLY	PROCESS TRACKER	MICROELECTRONIC ASSEMBLY
SELECTED ECO PRODUCTS <ul style="list-style-type: none">• SOLDERING• CLEANING• PCBA PROTECTION• THERMAL DISSIPATION	MATERIAL INCOMING COUNTING COMPONENTS	HIGH SPEED LINE MEDIUM SPEED LINE	<ul style="list-style-type: none">• FLYING PROBE• ICT• FT	ON-DEVICE PROGRAMMING IN-SYSTEM PROGRAMMING	PROTECTION CURING INSPECTION DEPANELING	SOFTWARE SOLUTION MES MANUFACTURING EXECUTING SYSTEM	<ul style="list-style-type: none">• PLASMA CLEANING• DICING• DISPENSING + DIE ATTACH• CHIP-ON-BOARD• CURING• WIRE BONDING• QUALITY TEST



Provider of equipment solutions, consumables and technical support for all sectors.



We represent the highest quality technology manufacturers, providing clear added value to our customers, the excellence.

ELECTRONIC ASSEMBLY EQUIPMENT



BACKEND



MATERIAL MANAGEMENT



MICROELECTRONIC ASSEMBLY EQUIPMENT



TEST EQUIPMENT



COMPONENTS / CONSUMABLES



OPTIC BONDING DIVISION



PROGRAMMING & SOFTWARE



Actual Customers

We pride ourselves on our relationships with our customers. Our relationships are based on years of **trust and support** with a direct relationship with headquarters.



GLOBAL MARKETS NETWORK



SMT
WORLDWIDE

WWW.SMTWORLDWIDE.COM



HEADQUARTERCENTER
BARCELONA - SANTA CATARINA
SEOUL - TUNISIA

DISTRIBUTIONCENTER
KOREA - MEXICO - FRANCE - SPAIN
PORTUGAL - TUNISIA