



Climatic modular chamber



The innovation as an attitude

The company

Ineltec is a company with more than 20 years of experience in the sector and 5.000 equipments installed all around the world. Our achievements are due to the ability of offering tailored solutions to perform any kind of test.

“Technology, research and innovation are the basis for creating equipments of high reliability.”



Model

Climatic modular
Chamber of
Ineltec



Our range of climatic modular chambers are made according to customer specifications.

Model

equipment description

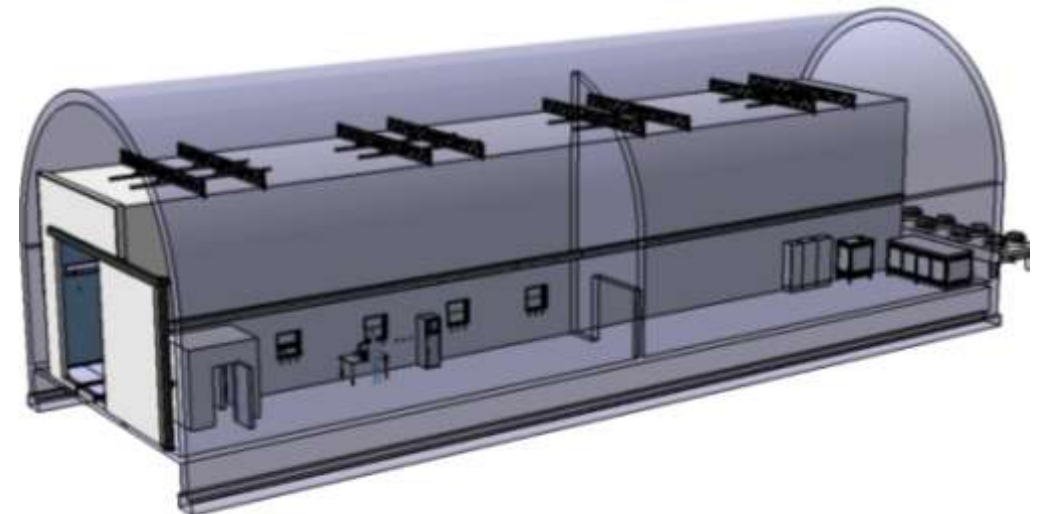
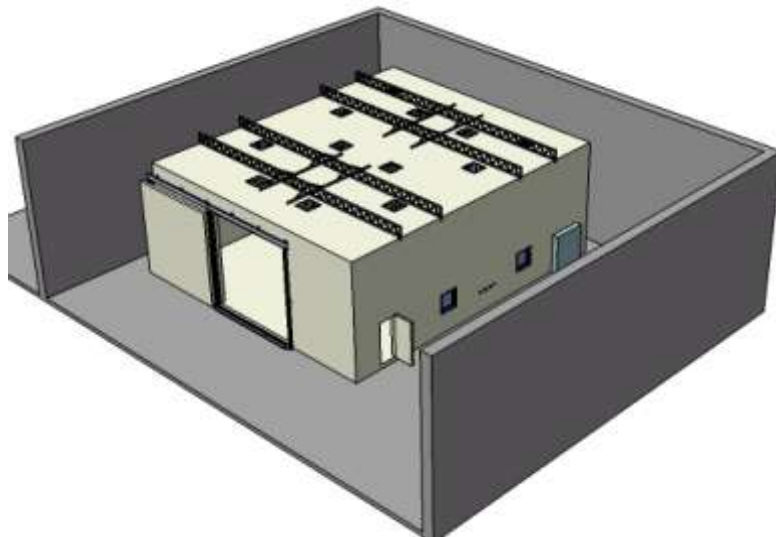
The climatic modular chambers simulated the environment conditions of heat and cold combined with humidity

The maximum temperature ranges are of -70°C and can reach to $+85^{\circ}\text{C}$. It is possible to modify or widen the characteristics according to the specifications

The climatic chambers are used in all the industrial sectors, because they fulfill climatic tests regulations for any product or material.

Volumes

01 from 2000 liters



Application Sectors



Aerospace,
Aeronautics,
Automotive,
Railway
Naval



Construction,
Luminary,
Wood ,
Cork,
Glass,
Coatings ,
Wiring,
Ceramics



Pharmacist ,
Cosmetics ,
Veterinary ,
Agrifood



Plastic,
Chemistry,
Petroleum,
Carton,
Paper industry,
Rubber



Biology
Biotechnology,
Agribiology,
Insects



I+D,
Technological
Centers,
Universities,
Laboratories



Electronics,
Appliances,
Telecommunicat
-ions,
Mechanical
construction,
metallurgy



Defense,
Armament



Mining
Steel,
Galvanic
Metallurgy



Textile

Regulations

DIN	EN	UNE	NF	ICH	FDA	ISO	ASTM	MIL	STD	VDA
IEC	BS	VG	IRAM	ETS	Telcordia	ECSS	RTCA	TR	SAE	UL
GR	NTS	ETSI	NEBS	NCh	SEMI	AS	NZS	ANSI	NMX	IRAM
ABNT	UNIT	INTN	NTP	...						

Equipment Characteristics

Construction



01

01/ inside/outside

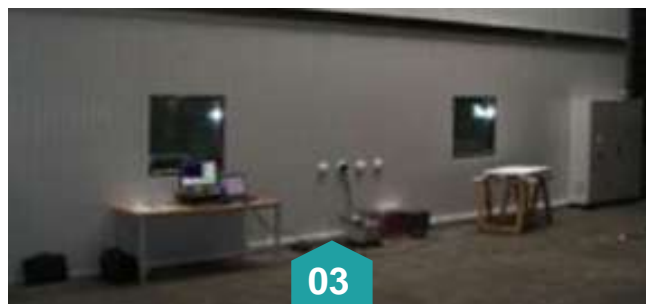
Both in the interior and in the exterior, there are injected polyurethane panels.



02

02/ electrical cabinet

En el exterior de la cámara se ubica el armario eléctrico.



03

03/ spyholes

In some cases, there are spyholes to see inside of the chamber.



04

04/ bushing

The climatic chambers have bushing for introduction of electrical wiring or calibration probe.



05

05/ Systems

The modular chambers are form of refrigeration, heating, humidifying and drying systems.



06

06/ Control system

The touch computer with software of simple control and intuitive programming allows acquisition, registration and control of all variables.



Equipment Characteristics

Functional

Climatic modular model	Maximum temperature range	RangeH.R.
Vol. Liters	-70°C	10%
	+65°C	98%
From 2.000	*	*

Stability

Temp. $\pm 0,3^{\circ}\text{C}$ max.
H.R. $\pm 2\%$ max.

Resolution

Temp. $0,1^{\circ}\text{C}$
H.R. $0,1\%$

Precision

Temp. $\pm 0,5^{\circ}\text{C}$ max.
H.R. $\pm 2\%$ max.

Homogeneity

Temp. $\pm 2^{\circ}\text{C}$ max.
H.R. $\pm 2\%$ max.

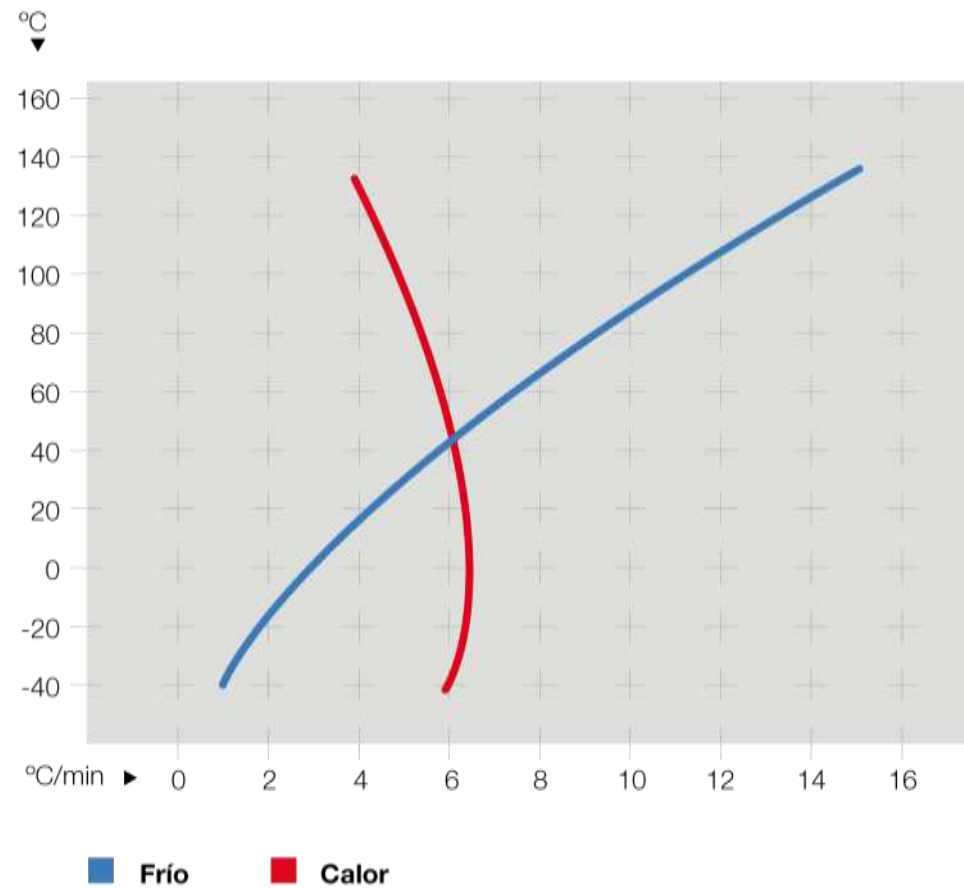
***Other characteristics
on request**



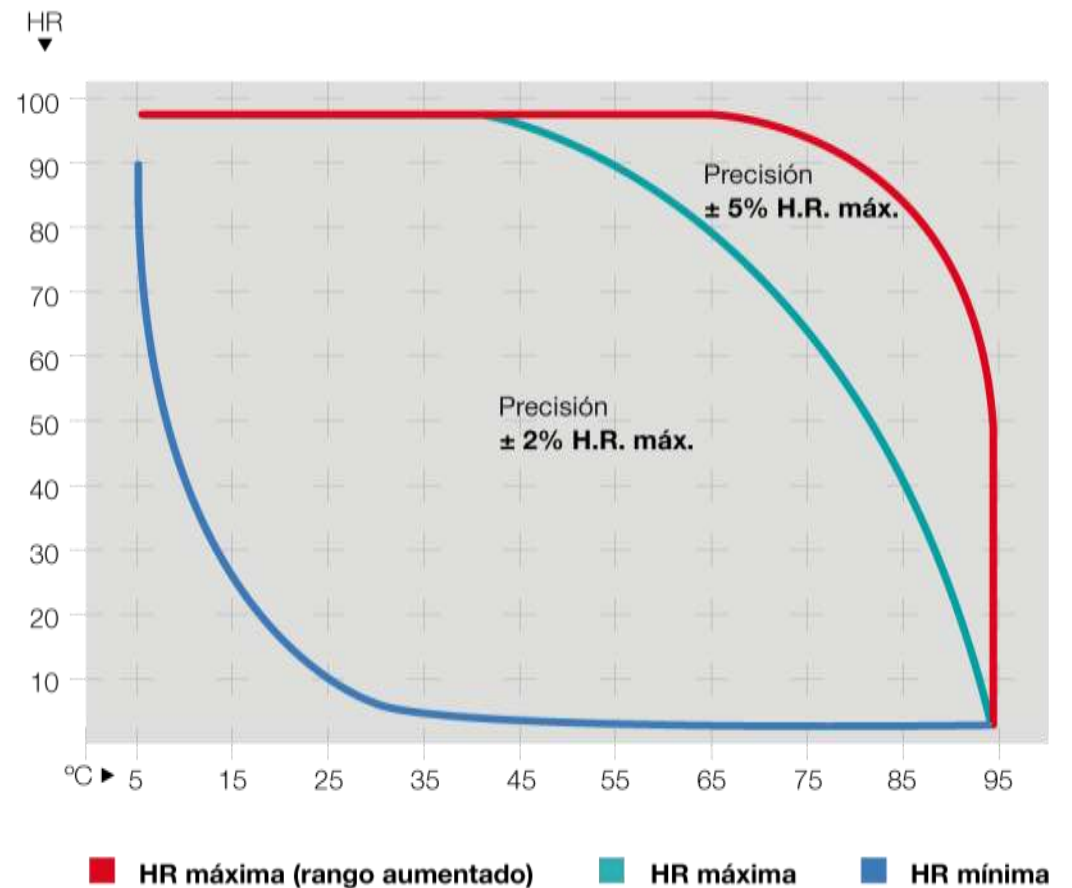
Equipment Characteristics

graphics

Gradients according to IEC-60068-3-5



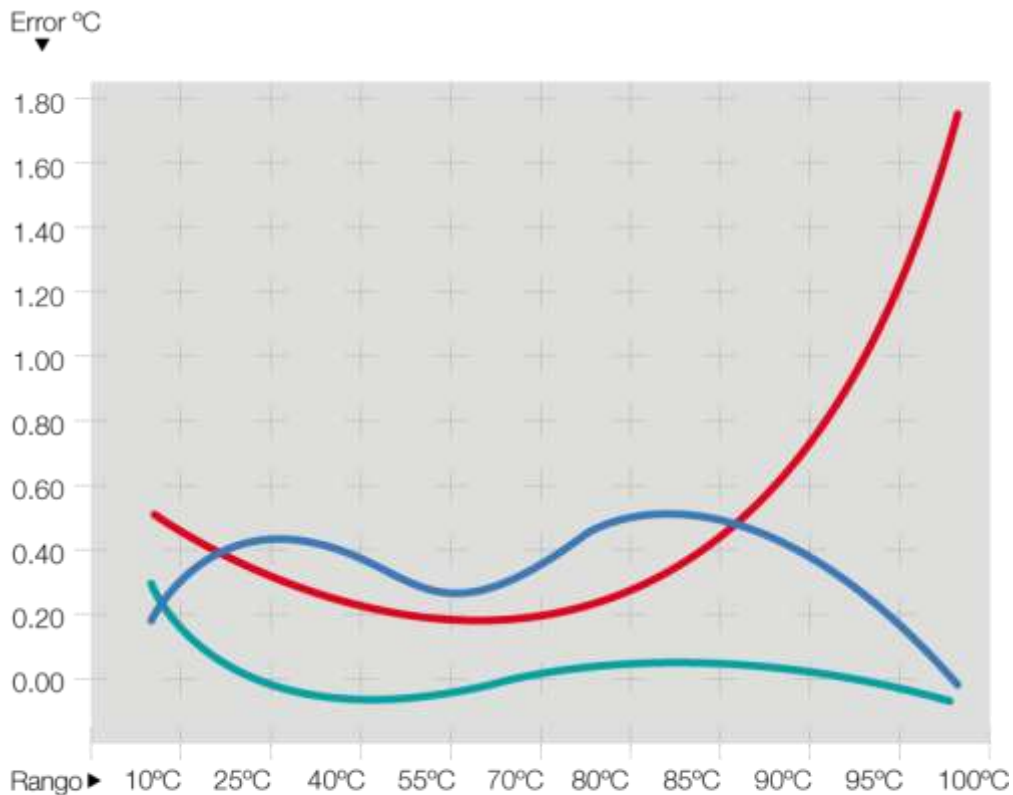
Work range H.R.



Equipment Characteristics

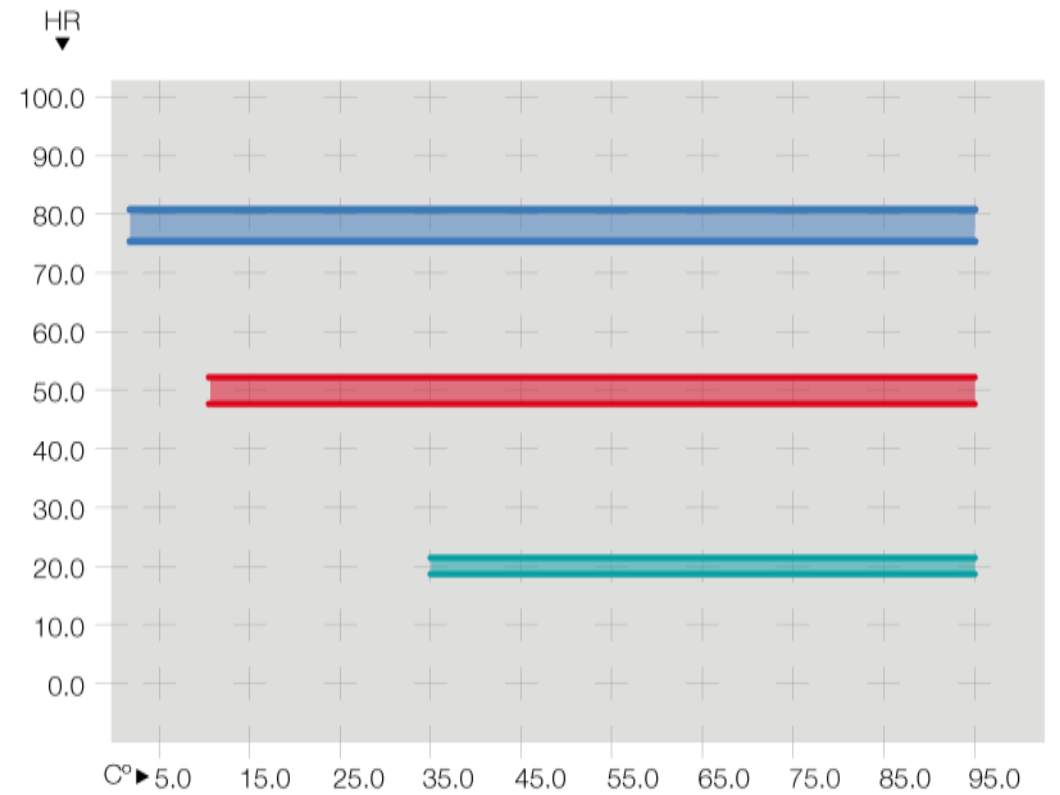
graphics

Temperature mistake



■ Error de uniformidad (+/-) ■ Error de lectura (+/-) ■ Estabilidad

Stability H.R. / T^a



■ Estabilidad H.R. 20% ■ Estabilidad H.R. 50% ■ Estabilidad H.R. 80%

Control systems

Touch screen



Characteristics

01 USB

02 Ethernet

03 Wi-Fi (opcional)

04 CF Socket

05 VGA Com.

06 RS 232 Com.

07 PS/2

software/ using

With the built-PROCAM-WIN software can perform the programming, acquisition, recording, monitoring and analysis of results.

software/ characteristics

- 1 / Manual or automatic programming.
- 2 / Boot up Programming test in specified day and time
- 3 / Let to write down during the tests
- 4 / Different access levels

- 5/ Maximum 11 operators
- 6/ More than 100 programs
- 7/ Maximum 100 segments per program
- 8/ Linking of 4 programs
- 9/ 1 to 999999 or infinite programming cycles

- 10/ Visualization and record of the tests in a graphic or table
- 11/ Option to export to Excel or similar
- 12/ Setting of minimum and maximum limits for alarms of temperature and humidity for each cycle.
- 13/ Controlling from distance through Ethernet, WIFI and WEB

Control systems

software/
screen

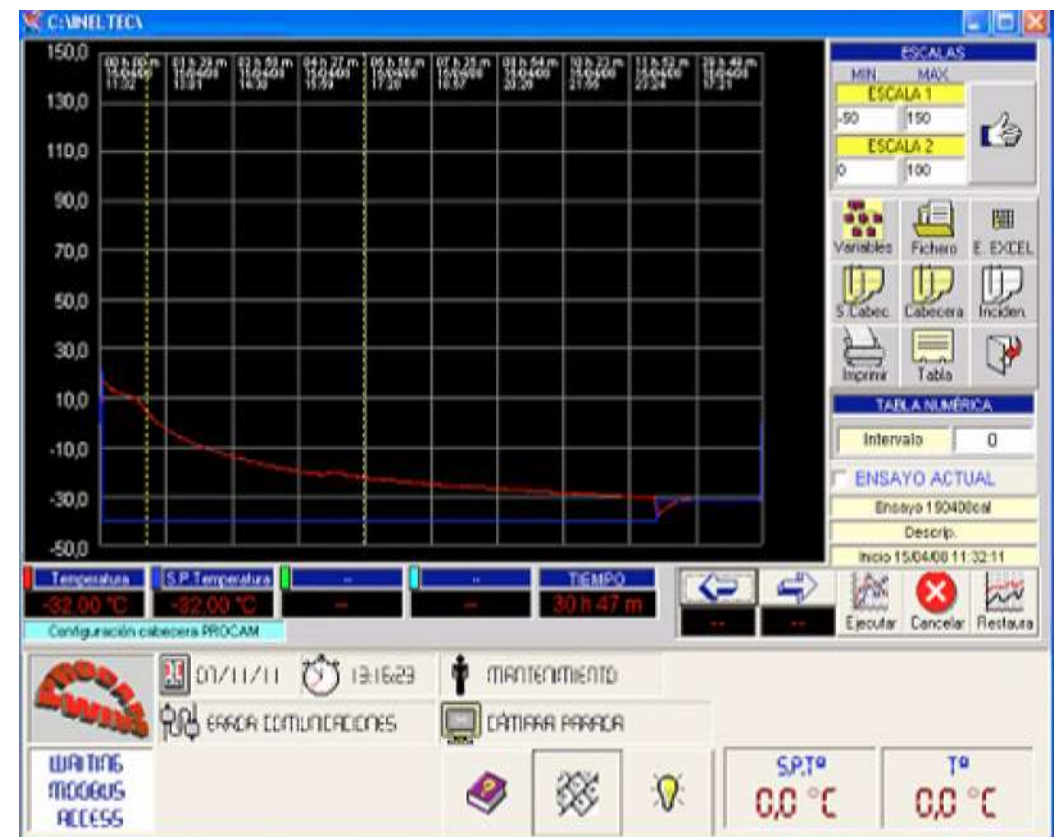
Operators



Maintenance screen



Software Procam-Win / graphics



Testing conditions



Programming of the chamber



Internacional presence



Range of products

Climatic modular chamber
INELTEC

ES Simulation equipments



Climatic chambers



Modular chambers



Thermal shock



Combined tests



Specials



Stability



Generator groups



Calorimetric



Corrosion - combined



Corrosion



Frost / Defrost



Tightness – rain



Tightness



Freezer cabinet



Thermostatic bath



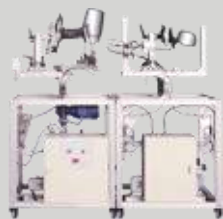
Furnace



Heating

Range of products

BE Testing bench



Fatigue endurance



Characterization



Pulsing pressure



Rupture



Bursting



Liquid Thermal Shock



Normalized



Resistance to the fire - I



Resistance to the fire - II



Reaction to the fire - I



Reaction to the fire - II

MC Measurement and control



Artificial vision - I



Artificial vision - II



Artificial vision - III



Finish line control - I



Finish line control - II



Ineltec
Spain / Barcelona
Headquarters



C/ Metal·lúrgia, 8
Pol. Ind. Les Goules
08551 Tona



T/ 0034 938 605 100
F/ 0034 938 717 463



ineltec@ineltec.es
www.ineltec.es

Follow us
on our
social networks



[twitter](#)



[Blog](#)

Regulation annex

BS 2011	DIN 50014	IEC 60068-3-5	MIL-E-5272, Met. 4.4	MIL-T 5422 E, part 4.4	VG 95332
BS 2011, Part 2, Test A	DIN 50016	IEC 60721-4	MIL-STD 202	Telcordia GR1435, Part	VG 95332, page 22
BS 2011, Part 2, Test B	DIN 60068	IEC 61300-2-17	MIL-STD 202 E, Met. 106 D	4.4.3	VG 95332, page 23
BS 2011, Part 2, Test Ca	DIN 72300-4	IEC 61300-2-18	MIL-STD 202 E, Meth. 103B	Telcordia GR1435, Part	VG 95332, page 3
BS 2011, Part 2.1, TEST DA	DIN/IEC 68-2-30	IEC 61300-2-19	MIL-STD 750 B, Met. 1021.1	4.5.3	VG 95332, page 34
BS 2011, Part 2.1, Test N	DIN/IEC 68-2-30 DB Var. 1	IEC 61300-2-21	MIL-STD 810 D	Telcordia GR1435, Part	VG 95332, page 4
CPMP/ICH/279/95	DIN/IEC 68-2-30 DB Var. 2	IEC 61300-2-22	MIL-STD 810 D, Met. 501.2	4.4.1	VG 95332, part 5
CPMP/ICH/380/95	DIN/IEC 68-2-56	IEC 61300-2-46	MIL-STD 810 D, Met. 502.2	Telcordia GR1435, Part	RTCA-DO-160G
DIN 12880 part 1	ECSS-Q-70-038	IEC 61300-2-47	MIL-STD 810, Met. 507 Proc. 1-2-	4.4.2	NCh2791.Of2003
DIN 40046	ECSS-Q-70-08A	IEC 61300-2-48	3	Telcordia GR1435, Part	NCh2802.Of2003
DIN 40046 part 2	ETS 300019-2	IEC 62108	MIL-STD 883	4.5.2	NMX-C-228-1984
DIN 40046 part 3	IEC 60068-2-1, Test A	IEC 68-2-1, part A	MIL-STD 883 C, Met. 1004.4	Telcordia GR1435, Part	UNIT 795:1990
DIN 40046 part 5, test C	IEC 60068-2-14 Test Nb	IEC 68-2-14	MIL-STD 883 C, Met. 1008.2	4.4.4	UNIT-IEC 60811-1-4:2004
DIN 40046, Part 101	IEC 60068-2-2, Test B	IEC 68-2-14 Nb	MIL-STD-202 E, Meth. 108A	Telcordia GR1435, Part	UNIT-IEC 60811-3-2:2005
DIN 40046, Part 14, Test Nb	IEC 60068-2-3, Test Ca	IEC 68-2-2, test B	MIL-STD-202, Meth. 103B	4.4.5	
DIN 40046, Part 14, Test Nb	IEC 60068-2-30, Test Db,	IEC 68-2-3, TEST	MIL-STD-202, Meth. 106D	Telcordia GR1435, Part	
DIN 40046, Part 14, Test Nb	Var.1	103B	MIL-STD-331 A, Meth. 105.1	4.5.1	
DIN 40046, Part 14, Test Nb	IEC 60068-2-30, Test Db,	IEC 68-2-3, test Ca	MIL-STD-331 A, Meth. 112.1	Telcordia GR1435, Part	
DIN 40046, Part 14, Test Nb	Var.2	IEC 68-2-30	MIL-STD-750 B, Meth. 1021	4.5.5	
DIN 40046, Part 3, Test A	IEC 60068-2-38	IEC 68-2-38	MIL-STD-810 D, Meth. 501	Telcordia GR326, Part	
DIN 40046, Part 31	IEC 60068-2-4, Test D	IEC 68-2-4, test D	MIL-STD-810, Meth. 502	4.4.2.1	
DIN 40046, part 4, test 3	IEC 60068-2-56	MIL-E 5272	MIL-STD-810, Meth. 507	Telcordia GR326, Part	
DIN 40046, Part 4, Test B	IEC 60068-2-66	MIL-E 5272, Met. 4.1	MIL-STD-883 C, Meth. 1008	4.4.2.2	
DIN 40046, Part 5	IEC 60068-2-67	MIL-E-5272, Met. 4.2	MIL-STD-883, Meth.1004	UNE-EN 60068	