

Mobile STW System

The Mobile STW System is comprised of a Mobiccart, C-Arm configuration, X-ray source and flat panel detector. The Mobiccart will allow the X-ray source and detector to be manually positioned around piping and other points of inspection. It will also allow for both height and angle adjustments as required to optimize the inspection performed. A Mobiccart concept is shown below; actual design may vary based on final requirements and optimal equipment specifications.

Applications: Tube Welds





Detector Specifications

Model: VJ-aSi12-IMGR
 Material: Amorphous Silicon
 Pixel Matrix: 2080 x 2560
 A/D Conversion: 14 bit
 Gray Scale: 16384
 Dynamic Range: >73 dB
 Resolution: 3.5 lp/m
 Energy Range: 40–150 kVp

Source Specifications

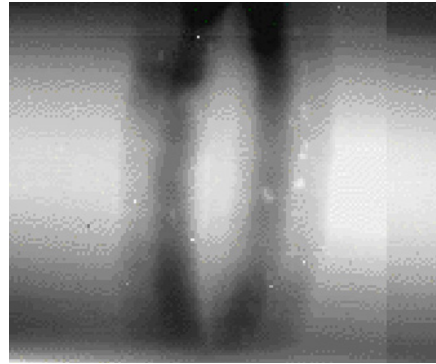
Model: IXS160BP500P092
 Input Line Range: 115/230 VAC, 50/60 Hz
 Output kV: 20–160 kV
 Output mA: 0.2–3.12 mA
 Output Power: 500W continuous
 Focal Spot Size: 0.8 mm as per IEC60336

Computer Specifications

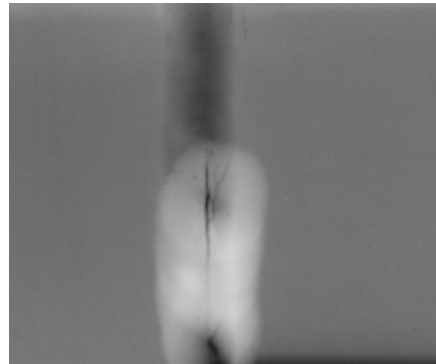
- Tough Book Field portable Laptop
- New generation flash drive
 - Hardened case
 - Extended Battery option and 1 extra battery
 - Built in Field Transport case
 - Wireless LAN

Software Specifications

- Fully configured Image acquisition Software
- V13 Acquisition Software
- V13 Review and Solution Script Software
- V13 Digital Detector ASTM WIZARD compliance software
- V13 Advanced (ADR) Filter
- V13 Acquisition Software



Girth Weld



Longitudinal Weld



Thin Wall Tube Weld



VJ Technologies Offices

Headquarters
 89 Carlough Road
 Bohemia, NY 11716

East Haven, CT
 Littleton, MA
 Buford, GA
 Paris, France
 Bengaluru, India
 Suzhou, China

