

SRT Series: Summit 1800

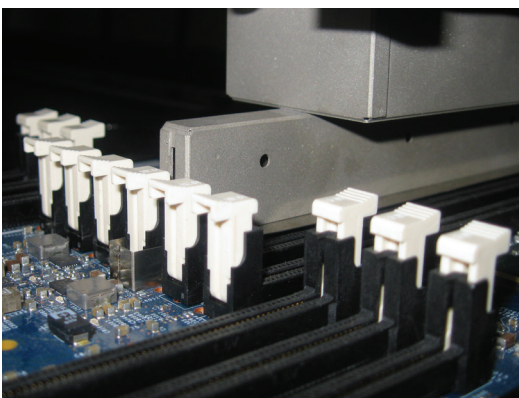
Semi-Automatic Rework System

VJ Electronix proudly offers the Summit 1800 within the SRT Series. The Summit 1800 Automated Rework system developed by SRT and further refined by VJ Electronix, is the industry's standard for Rework systems. The Summit 1800 provides the most advanced features designed specifically to address difficult Rework challenges.

Proprietary SierraMate™ Windows® based software provides an easy to use “1-2-3-Go” graphical user interface, featuring intuitive programming and Auto Profile. The 1800 is “production ready” with many standard features, providing a superior value.



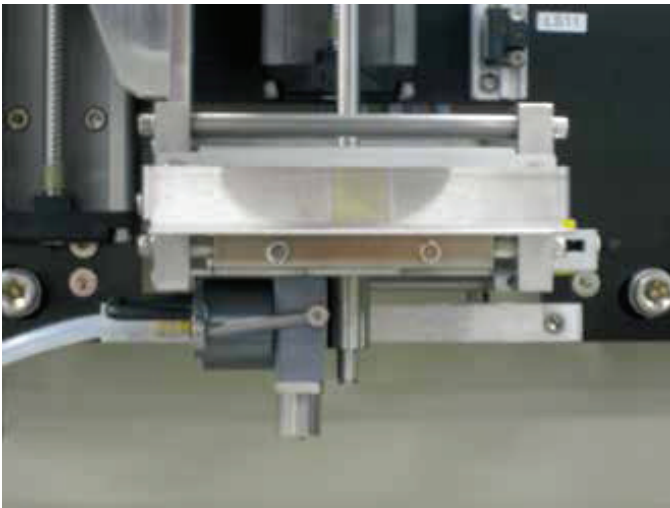
Summit 1800



DIMM Connector Rework

Key Features

- **Placement** - 0.0005" (12 μ) mean + 3 σ
- **Top Heater** - 1.6kW Focused Convection
- **Bottom Heater** - 4.0kW Convection Plenum
- **Field of View** - 2.6" (65mm) Square
- **Max. Board Size** - 18"X22" (455mm X 560mm) *standard*
22"X30" (560mm X 760mm) *optional*
- **Min. Component Size** - 0.005" (0.12mm)
- **Compliance** - CE mark



Solder Scavenger with Dynamic Height Sensing Automatic non-contact solder removal

The Summit 1800 is the premier Surface Mount Rework system. It incorporates well established features and benefits common to all Summit systems plus introduces state-of-the-art innovations to address the latest industry advancements and challenges.

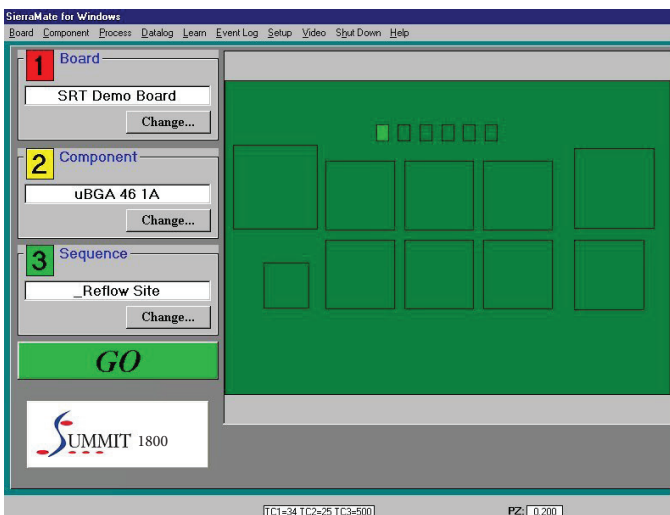
The Summit 1800 Key Features:

Standard Features

- SierraMate™ with Auto Profile
- Independent Heater and Pick-up tube control
- Precision Placement Capability
- High Magnification and Resolution
- High Heat Transfer Capacity

Optional Features

- DHS Solder Scavenger with programmable X-Y table
- 22”X30” X-Y Table with 7.8kW Bottom Area Heater
- Bottom Site Heater (Triple Stage Heating)



1-2-3-Go Operator Graphical User Interface