

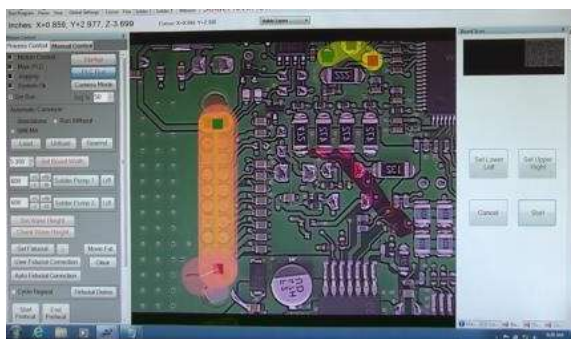
# SWAK-OS 4.0 Software

## Graphics-Based Programming and Integrated Machine Control Software

### Features and Benefits

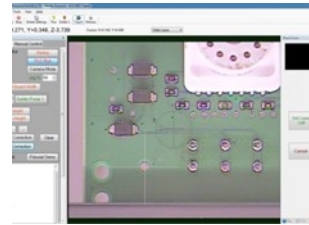
- Highly intuitive programming with graphical user interface allows users to quickly and easily create solder programs
- Seamless fiducial recognition and integrated board scanning automatically captures true-to-scale image of printed circuit board
- On-the-fly editing of flux and solder paths with program updates automatically archived
- Program mobility across multiple machine platforms with single user interface for global deployment between worldwide facilities
- Features include automated fiducial alignment, board warp compensation, on-demand help videos and remote machine diagnostics

**Overview.** SWAK-OS 4.0 is a state-of-the-art programming and editing software that enables graphic monitoring of selective soldering programs. Programs are quickly and easily created by painting on flux and solder paths with a single screen GUI. On-the-fly editing for quick adjustments can be easily made to fully optimize the process. SWAK-OS 4.0 is network compatible facilitating complete data storage and maintenance logging.



SWAK-OS 4.0 graphics-based programming software

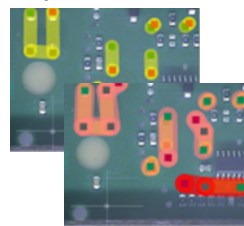
### Step #1 Capture fiducial locations



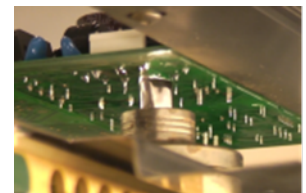
### Step #2 Create true-to-scale image



### Step #3 Paint flux and solder paths



### Step #4 View process in real-time



**Integrated Solution.** The Nordson SELECT SWAK-OS 4.0 software fully integrates with all closed-loop process controls providing seamless operation for your entire selective soldering process. Nordson SELECT's closed-loop process controls enable successful results for a full range of soldering applications and ensures stable and repeatable results for high-yield production.

**Experience.** With over a decade of selective soldering experience and more than a thousand systems currently in production, Nordson SELECT is committed to providing innovative solutions for all selective soldering needs. Our global support network, including state-of-the-art application development labs, provides customers with world-class know-how and application expertise.

# SWAK-OS 4.0 Software

## Standard Features

- Revolutionary graphics-based programming and editing functions without text based editing
- Live streaming of all process viewing camera video feeds from a single machine that simultaneously monitors soldering process
- Streamlined GUI for easy machine operation, programming and editing
- Automatic fiducial alignment with single click teach capability, seamless fiducial recognition and true X-Y and skew alignment
- Integrated board scanning function, seamlessly creates true-to-scale image and saves board image to program
- Paint on flux and solder paths to create program with single screen GUI
- On-the-fly editing for quick program adjustments
- Rotate, mirror and X-Y panel matrix commands
- Pattern recognition of correct board assembly, x-out circuits or missing components
- Board warp compensation function
- Network compatibility with full PC backup plus program and project storage capability
- All process and motion functions are fully monitored and controlled
- Settable time/temperature profile for each individual component type for maximized process control
- Comprehensive library of on-demand help videos covering programming, preventative maintenance, calibration, etc.
- Remote machine diagnostics for long distance real-time viewing of possible abnormalities
- Process and machine interlocks
- 24/7 timer for solder pot
- Selectable password with encrypted access levels

**Nordson SELECT, Inc.**

**+1.509.924.4898 Phone**

**[sales.usa@nordsonselect.com](mailto:sales.usa@nordsonselect.com) Email**

**22425 East Appleway Avenue**

**Liberty Lake, WA USA 99019-8508**

**[www.nordsonselect.com](http://www.nordsonselect.com)**

**Published 2018-30-05**

**For more information, speak with  
your local representative or  
contact your regional office.**

**[Nordsonselect.com](http://Nordsonselect.com)**

### **North America**

#### *Headquarters*

Liberty Lake, WA, USA

+1.509.924.4898

[sales.usa@nordsonselect.com](mailto:sales.usa@nordsonselect.com)

### **China**

Email:

[info.cn@nordsonselect.com](mailto:info.cn@nordsonselect.com)

Shanghai

+86.21.3866.9166

Beijing

+86.10.8453.6388

Guangzhou

+86.20.8554.9996

### **Europe**

Maastricht, Netherlands

+31.43.352.4466

[info.eu@nordsonselect.com](mailto:info.eu@nordsonselect.com)

### **Japan**

Tokyo

+81.3.3599.5920

[Info.japan@nordsonselect.com](mailto:Info.japan@nordsonselect.com)

### **Korea**

Seoul

+82.31.765.8337

[info.kr@nordsonselect.com](mailto:info.kr@nordsonselect.com)

### **India**

Chennai

+91.44.4353.9024

[info.in@nordsonselect.com](mailto:info.in@nordsonselect.com)

### **S.E. Asia/Australia**

Singapore

+65.6796.9514

[info.sg@nordsonselect.com](mailto:info.sg@nordsonselect.com)

### **Taiwan**

+886.229.02.1860

[info.tw@nordsonselect.com](mailto:info.tw@nordsonselect.com)

