

# Quantum<sup>®</sup> Q-6800 Series

Automated Fluid Dispensing System with Advanced Process Controls

## Features and Benefits

- Large dispense area (423 x 458 mm) is ideal for a wide-range of substrate sizes and dual-valve dispensing
- Range-finding laser height sensor enables fast, non-contact dispense height measurement
- Digital vision system with enhanced vision software for superior imaging detection
- Patented Calibrated Process Jetting<sup>™</sup> (CPJ) process control automatically compensates for changes in fluid viscosity



## Uncompromising quality and value

The Quantum Series is the cost-effective dispensing solution for customers who demand highest quality and value for mid- to high-complexity dispensing applications.

With the Quantum system, customers no longer have to choose between acquisition cost and high-quality dispensing capability.

***Benefit from Decades of Dispensing Know-how.*** From the original jet dispensing company for electronics assembly, Nordson ASYMTEK's Total System Solution expertise in platform and dispensing technologies deliver quality, speed, flexibility and lower cost of ownership.

***More Value.*** The Quantum system includes advanced process management features such as fluid weight scale, patented Mass Flow Control (MFC)/Calibrated Process Jetting (CPJ) closed-loop process control, range-finding laser height sensor, digital vision system with enhanced fiducial image processing, and programmable substrate heat capability.

***End-to-end Customer Care.*** From initial process development through full-scale production, you are supported by our experienced worldwide engineering, applications development and technical service network.

# Quantum® Q-6800 Series Features

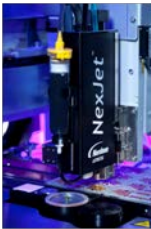
The Quantum dispenser with Nordson ASYMTEK's applicator technology serves as a reliable and cost-effective solution for many demanding fluid dispense requirements for PCBA, SMT and other electronic assembly applications.

## Recommended for:

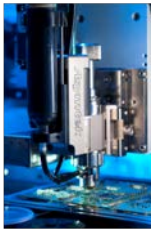
- CSP, BGA and board-level underfill
- Surface mount adhesives
- Corner and edge bonding
- Dam and fill
- Potting and encapsulation
- Conductive epoxy
- Case assembly
- Larger board or substrate sizes

**At Nordson ASYMTEK, we deliver the whole package:  
Technology + Process Capability + Global Support**

*NexJet® 8  
Jetting System*



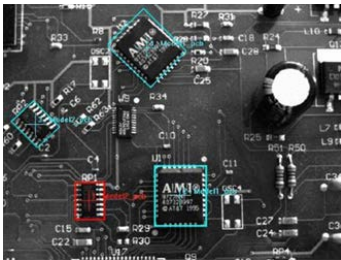
*DispenseJet®  
Jet*



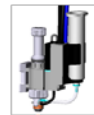
*Heli-flow®  
Pump*



**Nordson ASYMTEK Applicators** have an established reputation for quality, flexibility and lower cost of ownership.



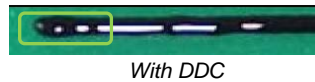
**Digital Vision System** incorporates easy to use powerful vision algorithm for quickly finding and teaching fiducials even when that target varies in size, contrast or rotation.



Scale

**CPJ Process Control**  
Automatic dispensed  
weight compensation

**Patented Mass Flow Control (MFC)/Calibrated Process Jetting (CPJ)** ensures the right amount of material is dispensed for each part from the beginning to the end of the production run.



*With DDC*



*Without DDC*

**Dynamic Dispense Control (DDC)** provides faster dispensing without compromising dispensed line quality.

## Standard

- Range-finding Laser Height sensor
- Calibration Station
- Digital Vision system
- Weight Scale with CPJ/MFC
- Single applicator support

## Available

- Dual applicator support
- Dual-lane configuration
- Fids-on-the-Fly™ software
- Pre- and post-queue stations
- SECS/GEM interface

**Contact Nordson ASYMTEK today and put our expertise to work for you!**

# Quantum® Q-6800 Series Specification Highlights

## Dispense Area (X-Y) <sup>(1)</sup>

423 x 458 mm (16.7 x 18.0 in.), single applicator with offsets for vision and height sense

## Board Handling <sup>(1)</sup>

Max. board/carrier length:	One station: 600 mm (23.6 in.); Three stations: 320 mm (12.6 in.)
Min. board/carrier length:	25 mm (0.98 in.)
Max. board/carrier width:	Single lane: 520 mm (20.4 in.); Dual lane: up to 220 mm (8.6 in.)
Min. board/carrier width:	25 mm (0.98 in.)
Max. board/carrier thickness:	12 mm (0.5 in.)

## System Dimensions and Weight

System footprint:	1100 x 1241 mm (43.3 x 48.8 in.)
System weight <sup>(2)</sup> :	435-490 kg (960-1080 lbs.)

## Standards Compliance

SEMI-S2; SEMI-S8; SMEMA; CE

- (1) Contact factory regarding other travel distance, board/carrier size compatibility  
(2) System weight varies depending on configuration

For more information,  
visit our website to  
locate your local  
representative or  
contact your regional  
office:

[nordsonasymtek.com](http://nordsonasymtek.com)  
[info@nordsonasymtek.com](mailto:info@nordsonasymtek.com)

### North America

Headquarters  
Carlsbad, CA

### China

Shanghai  
Beijing  
Guangzhou  
Taipei

### EMEA

Deurne, Netherlands

### S.E. Asia/Australia

Singapore

### Korea

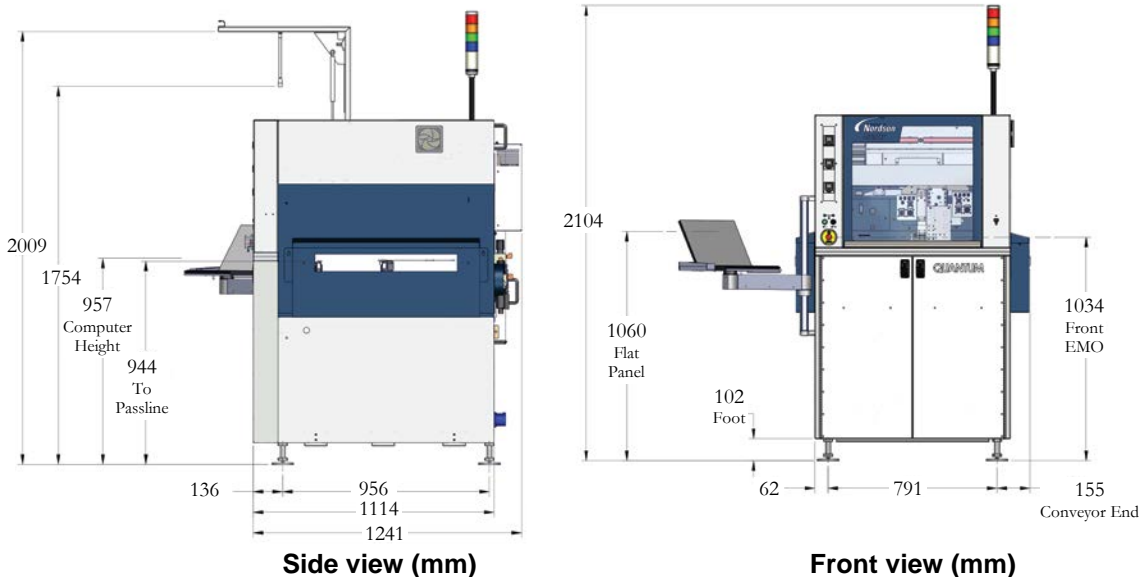
Seoul

### Japan

Tokyo

### India

Chennai



**Nordson ASYMTEK**

**+1.760.431.1919**

**2747 Loker Avenue West**

**Carlsbad, CA USA 92010-6603**

**Published 2018-04-25 (Updated)**