

Four-Position Tilt Accessory

For Conformal Coating Applicators

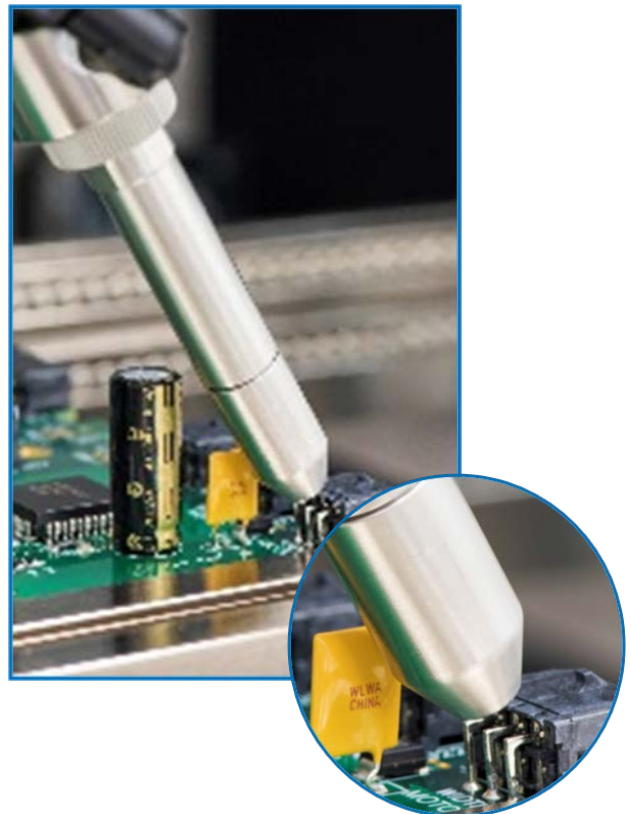
Features and Benefits

- Increased accessibility into hard-to-reach areas
- Coating access in four tilt positions, plus vertical
- Software controlled
- Easy to retrofit on existing systems
- Available for the SC-300 and SC-400 applicators



The Four-Position Tilt accessory enables the SC-300 and SC-400 applicators to coat four sides of a part or other areas not accessible from the standard vertical approach. It is ideal for coating component sides or underneath components on a printed circuit board. The mechanism can be tilted 30 degrees from vertical position to the left, right, front or back.

The tilt accessory mounts directly into the z-head of the platform. The applicator then mounts onto the tilt accessory. A pressure regulator and flow control fittings complete the set-up. Software reconfiguration to the new accessory is performed easily. The new coating tool is available and ready for use in minutes.



Four-Position Tilt Accessory Specifications

Tilt Positions (looking from the side)



Vertical



Tilt Right



Tilt Left



Tilt Forward



Tilt Backward

For more information,
visit our website to
locate your local
representative or
contact your regional
office:

nordsonasymtek.com
info@nordsonasymtek.com

North America

Headquarters
Carlsbad, CA

China

Shanghai
Beijing
Guangzhou
Taipei

EMEA

Deurne, Netherlands

S.E. Asia/Australia

Singapore

Korea

Seoul

Japan

Tokyo

India

Chennai

Description	X-axis - mm (in.)	Y axis - mm (in.)
Standard dispense area (with idle station)	457 (18.0)	381 (15.0)
Dispense area accessible with tilt mode engaged (4 positions approaching from the outside into each of the four sides of a PCB)	387 (15.3)	346 (13.6)

Nordson ASYMTEK

+1.760.431.1919

2747 Loker Avenue West

Carlsbad, CA USA 92010-6603

Published 2018-03-21 (Updated)