

# Desktop Series Constant Heat ACF Laminating

The Amada Miyachi Europe Hot Bar Desktop Series uses the proven SH500 pneumatic bonding head technology and offers reliable process control.

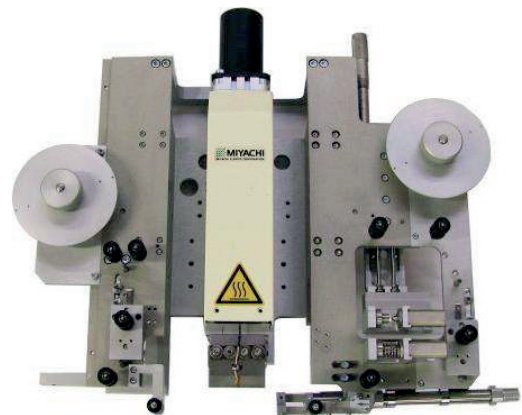
All modules are mounted on a sturdy and easily adjustable frame. The Desktop Series includes different product handling features like left-right and front-rear slides as well as rotary tables. All systems offer maximum output and are designed according to modern ergonomic standards. Optional components for the Desktop Series are Sarcon and Kapton Interposer Modules as well as product tooling.

## KEY FEATURES

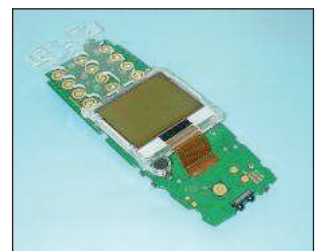
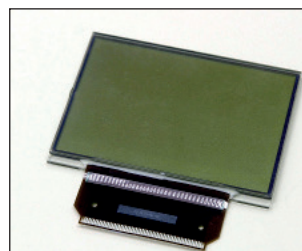
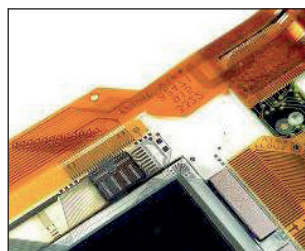
- Compact and flexible systems for high quality connections
- Easily adjustable frame construction
- Ideally suited for ACF Laminating (Pre-bonding)
- Reliable process control thanks to proven technology
- Optional Pulsed Heat Temperature Control (Retrofittable)
- Optional Light-Screen Safety protection cover (Retrofittable)

## CONFIGURATION OPTIONS

- 3-layer ACF tape configuration upgrade
- Desktop upgrade to Pulsed Heat Temperature Control
- Manual/Automatic Sarcon Interposer module
- Combined ACF Laminating/Final bonding using dual bond force and pulsed heat



## TYPICAL APPLICATIONS



## TECHNICAL SPECIFICATIONS

Force range	SH 500: 50 – 500 N @ 6 Bar **
Hot Bar stroke	50.0 mm [2.0 inch ]
Temperature range	Laminating 50 – 150 °C (Constant heat configuration)
Time period	Reflow: 0.1 to 99.9 seconds (0.1 second increments)
Power requirements	100 to 240 Vac, 50/60 HZ, 16 Amp max
Air supply	4 – 8 bar [ 60 – 120 psi ] , dry & filtered air
Maximum fixture height	50 mm [1.97 Inch ]
Gantry open width	520 mm [ 20.47 Inch ]
Fixture assembly base plate	160 x 160 mm [ 6.30 x 6.30 Inch ]
Starting operation	Two hand control
Operating temperature	15 – 40 °C
Operating humidity	93% @ 40 °C
** For additional specifications, please review the Bonding Head Datasheet	

## ACF LAMINATING MODULE TECHNICAL SPECIFICATIONS

ACF Module (Standard configuration)	Standard 2-Layer tape configuration Standard ACF Laminating (LxW) 50 mm x 2,0 mm Minimum ACF Laminating (LxW) 5 mm x 1,0 mm (Optional) ACF Laminating (LxW) 100 mm x 2,0 mm Placement accuracy: X-direction +/- 0,5 mm / Y-direction +/- 0,3 mm
ACF Module (Optional upgrade)	Upgrade to 3-Layer ACF tape configuration
Peeler mechanism	Pneumatic
ACF tape cutting	Half-cut
Tape Feeding and Tension Control	DC-Motor & sensor controlled

## ACF LAMINATING DESKTOP MODEL SPECIFICATIONS

Desktop DT-150-ACF-CH	No movement
Desktop DT-250-ACF-CH (manual 2-position front-rear slide)	Stroke between front and bonding position: 200 mm fixed Desktop DT -260-ACF-CH
(manual 3-position front-rear slide)	Stroke between first and second bonding position: 0-50 mm
Desktop DT-350-ACF-CH (automatic 2-position front-rear slide)	Stroke between front and bonding position: 200 mm fixed
Desktop DT-360-ACF-CH (automatic 3-position front-rear slide)	Stroke between first and second bonding position: 0-50 mm
Desktop DT-440-ACF-CH (manual 2-position turntable)	Turntable diameter: 380 mm
Desktop DT-450-ACF-CH (automatic 2-position turntable)	Turntable diameter: 380 mm / turntable movement time: < 2 seconds

## WEIGHT & DIMENSIONS

Dimensions HxWxD (mm)	510 x 550 x 600
Weight (in kg)	40 kg (excluding Uniflow Power Supply for optional Pulsed Heat configuration)



Lindberghstrasse 1 • DE-82178 Puchheim, Germany  
T: +49 (0) 89 83 94 030 • Fax : +49 (0) 89 839403 68  
infode@amadamiyachi.eu • www.amadamiyachieurope.com  
ISO 9001 Certified Company



### EUROPE

Amada Miyachi Europe BV  
Helmond, The Netherlands  
T: +31 (0) 492 542 225  
infoeu@amadamiyachi.eu

Amada Miyachi Europe Kft.  
Budapest, Hungary  
T: +36 1 431 9927  
infohu@amadamiyachi.eu

Amada Miyachi Europe  
Derby, United Kingdom  
T: +44 (0) 1332 361 238  
infouk@amadamiyachi.eu

Amada Miyachi Europe  
Saint Germain en Laye, France  
T: +33 (0) 139 046 430  
infofr@amadamiyachi.eu

Amada Miyachi Europe  
Torino, Italy  
T: +39 011 223 83 16  
infoit@amadamiyachi.eu

Amada Miyachi Europe  
Prague-West, Czech Republic  
T: +420 251 512 157  
infofoc@amadamiyachi.eu

### AMERICAS

Amada Miyachi America Inc.  
Monrovia, CA, USA  
T: +1-626-303-5676  
info@amadamiyachi.com

Amada Miyachi do  
Brasil Ltda.  
Sao Paulo, Brasil  
T: +55-11-4193-1187  
antonio.ruiz@miyachi.com

### ASIA

Amada Miyachi Co., Ltd.  
Noda, Japan  
T: +81-4-7125-6177  
sales@miyachi.com

Amada Miyachi  
Shanghai, Co., Ltd.  
Shanghai, China  
T: +86-21-6448-6000  
zqzhang@msc.miyachi.com

Amada Miyachi  
Korea Co., Ltd.  
Gyeonggi-do, Korea  
T: +82-31-8015-6810  
dykim@mkc.miyachi.com

Amada Miyachi  
Taiwan Co., Ltd.  
Taipei, Taiwan R.O.C.  
T: 886-2-2397-4778  
keigaku@miyachi.com

Amada Miyachi  
(Thailand) Co., Ltd.  
Samutprakarn, Thailand  
T: +66-2751-9337-8  
info@mtl.miyachi.com

Amada Miyachi  
Vietnam Co., Ltd.  
Ho Chi Minh City, Vietnam  
T: +84-8-3771-7972

Amada Miyachi  
India Pvt., Ltd.  
Bangalore, Karnataka  
info@miyachiindia.com

All data, images and text are subject to change at any time. Amada Miyachi Europe GmbH reserves the right to change, modify, delete and add technical specifications and product details at any time without prior notification. © 2015 Amada Miyachi Europe GmbH.

follow us on:

