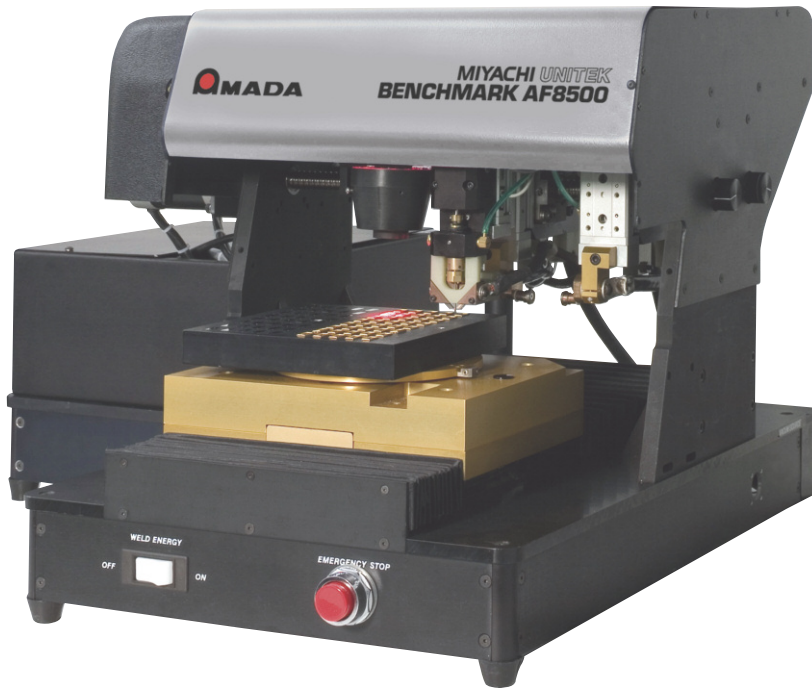


Benchmark AF8500/AF1250

Autoflow Lid Placement, Tack and Seam Sealing Systems

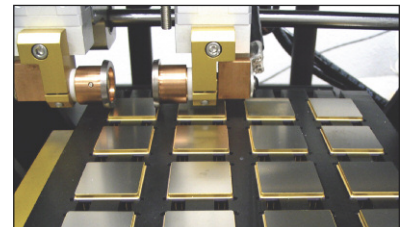
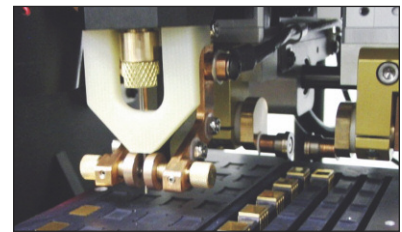


The AF series automated **seam sealing** systems provide users with the flexibility to meet the increasing demands of lid placement and seam sealing either as a stand-alone unit or as part of a fully integrated glovebox or automated manufacturing line. The computer-controlled precision tacking and seam-sealing mechanism is combined with a high frequency inverter power supply, and an optional high resolution vision system to provide a robust and repeatable process.

KEY FEATURES

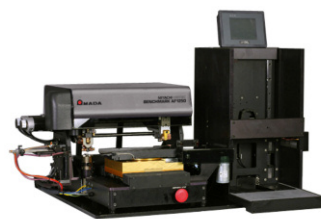
- Programmable electrode force and weld current using a Windows®-based proprietary software
- Closed-loop high frequency inverter welding power supply features low sealing temperatures and power feedback, increasing yields and productivity
- Current control mode optimized for superior seam sealing results
- Position-based weld pulses ensure consistent spot spacing, optimized spot density at corners, reduced leaks, and elimination of acceleration/deceleration problems
- Auto-Trak™ software indexes electrodes ensuring extended electrode life and more even wear
- Electrode roll-back feature assists in electrode release from lightweight parts
- Automated lid alignment and placement option holds lid in place during tacking, preventing misalignment; easy-to-program vision software
- Automated magazine loader option loads from either top or bottom for a fully or semi-automated part handling system

TYPICAL APPLICATIONS



WIDE RANGE OF PART PROCESSING CAPABILITIES

- Operates as tacker only, sealer only, or combined tacker-sealer
- Four-pass welding feature starts weld from center and welds to the part corner – best for large parts sealing
- Set different energy levels for each axis welded for higher yields on rectangular parts
- Single or double side tack options
- Real time monitoring of weld inhibit inputs such as moisture, oxygen, and helium levels
- Unlimited weld schedule storage
- Lid hold-down feature assists tacking process
- Chain or link multiple schedules together



Model AF1250-ST shown with optional magazine handler for automated pallet loading and unloading

TECHNICAL SPECIFICATIONS

Part size with vision, pick-place and tack	0.118 in - 4.3 in (3 mm - 110 mm)	
Part size without vision and pick-place	0.118 in - 8 in (3 mm - 203 mm)	
Lid placement accuracy	+/-0.003 in (+/-0.08 mm)	
Weld force (programmable)	500 to 3000 grams (1g increments)	
Linear weld speed	0.01 to 1.5 in/sec (0.01 increments)	
HF25 current output	100 to 2400 amps, ±2 amps	
HF25 pulse width	0.10 to 99.00 milliseconds (0.01 increments)	
Input power – HF25 power supply	192 - 264 VAC (240 V nominal), 3 Ph, 50/60 Hz, 25 amps 320 - 440 VAC (400 V nominal), 3 Ph, 50/60 Hz, 20 amps 384 - 528 VAC (480 V nominal), 3 Ph, 50/60 Hz, 13 amps	
Mechanism input power	Autovolt 110 to 240 VAC 50/60 Hz single phase 15 amp	
Compressed gas requirements	60 psi minimum	
Calibration	To NIST standards	CE certified

WEIGHT & DIMENSIONS

	AF8500 mechanism	AF1250 mechanism with control box	HF25 power puppy
Dimensions (L x W x H)	28 in X 28 in X 17 in (712 mm x 712 mm x 432 mm)	Mechanism – 30 in x 28 in x 17 in (762 mm x 712 mm x 432 mm) Control box – 11 in x 15 in x 14 in (280 mm x 381 mm x 356 mm)	17 in x 10 in x 13 in (413 mm x 235 mm x 331 mm)
Weight	120 lbs (55 kg)	145 lbs (66 kg)	54 lbs (24.5 kg)



1820 S. Myrtle Ave. • Monrovia, CA 91016 US
T: (626) 303-5676 • F: (626) 358-8048
info@amadamiyachi.com • www.amadamiyachi.com
ISO 9001 Certified Company • 24/7 Repair Service: 1-866-751-7378

AMADA MIYACHI AMERICA, INC.

MIYACHI | MIYACHI | MIYACHI
UNITEK | P E C O | CAPRO

AMERICAS
Amada Miyachi
America Midwest
Wixom, MI 48393
T: (248) 313-3078
midwestsales@amadamiyachi.com

Amada Miyachi do
Brasil Ltda.
Sao Paulo, Brasil
T: +55-11-4193-3607
antonio.ruiz@amadamiyachi.com

EUROPE
Amada Miyachi
Europe GmbH
Puchheim, Germany
T: +49 (0) 89 83 94 030
infode@amadamiyachi.eu

ASIA
Amada Miyachi Co., Ltd.
Noda, 278-0016 Japan
T: +81-4-7125-6177
sales@miyachi.com

Amada Miyachi
Shanghai, Co., Ltd.
Shanghai, China
T: +86-21-6448-6000
zqzhang@msc.miyachi.com

Amada Miyachi
Korea Co., Ltd.
Gyeonggi-do, Korea
T: +82-31-8015-6810
dykim@mkc.miyachi.com

Amada Miyachi
Taiwan Co., Ltd.
Taipei, Taiwan R.O.C.
T: 886-2-2397-4778
keigaku@miyachi.com

Amada Miyachi
(Thailand) Co., Ltd.
Samutprakarn, Thailand
T: +66-2751-9337-8
info@mtl.miyachi.com

Amada Miyachi
Vietnam Co., Ltd.
Ho Chi Minh City, Vietnam
T: +84-8-3771-7972

Amada Miyachi
India Pvt., Ltd.
Bangalore, Karnataka
T: 080-4092-1749 & 3549
info@miyachiindia.com

Amada Miyachi
America Mexico
El Paso, TX 79925
T: (915) 881-8765
mxsales@amadamiyachi.com

follow us on:



Specifications subject to change without notice. Copyright© 2015 Amada Miyachi America, Inc. The material contained herein cannot be reproduced or used in any other way without the express written permission of Amada Miyachi America, Inc. All rights reserved.